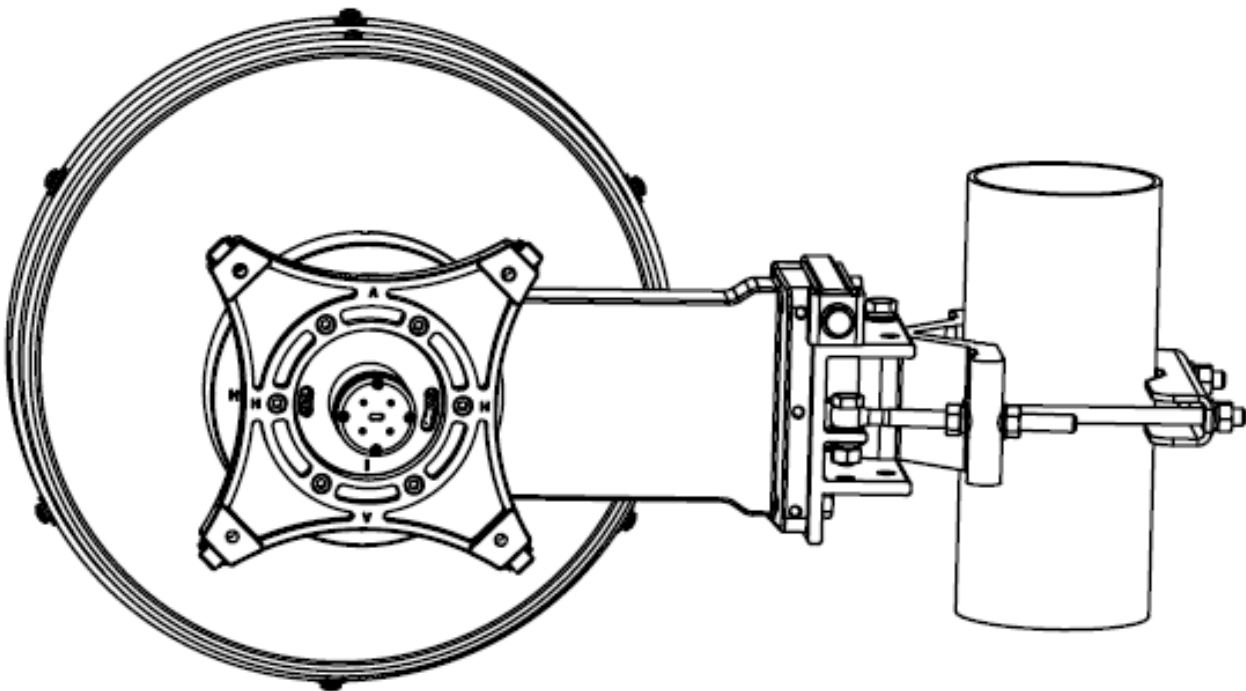


Installation Instructions

For 1 foot / 0.3m Diameter Ultra-High Performance Antenna

Model ADxxG-1-S2



Before Installation, please read the instructions carefully.

- ◆ This instruction book is for the installation of 0.3m ultra-high performance microwave antenna.
- ◆ Installation, maintenance and removal of antenna should be carried out by qualified personnel.
- ◆ To guarantee performance, the antenna system should be inspected once a year by qualified personnel.
- ◆ The mount for this antenna is designed for a 2.0-4.5 inch (50-114 mm) diameter pole.

CONTENTS



1. Installation Preparation	3
2. Open the Package and Identify Parts	4
3. Mounting Bracket Assembly	5
4. Install Antenna to Mounting Pole	8
5. Mount Horizontal (Azimuth) Adjustment	9
5. Elevation Adjustment.....	10
7. Finish Antenna Assembly	11
8. Mechanical Dimensions:	12

1. Installation Preparation

1.1 Mounting Pole

The antenna should be attached to a Mounting Pole of diameter from 2 to 4.5 inches (50-114 mm).

1.2 Tools Required for Installation

No.	Name	Specification	Quantity
1	Spanner 	S=16	2 pcs
2	Torque spanner 		1 pc

1.3 Torque Parameters of Standard Parts

Please use the following torque specifications when assembling the antenna.

Table of Torque Parameters

NO.	Fastener Size	Torque (N·m)
1	M3	0.6
2	M4	1.3
3	M5	3
4	M6	5
5	M10	28

2. Open the Package and Identify Parts

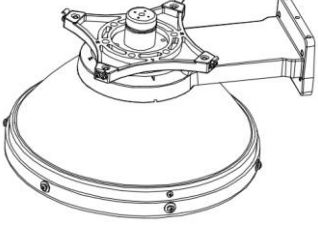
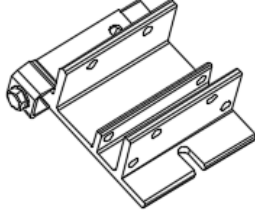
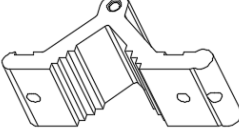
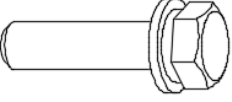
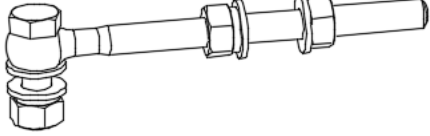

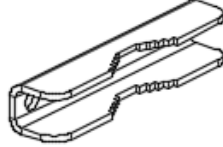
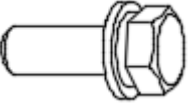
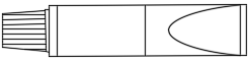

<p>1. Microwave Antenna (Reflector assembly,1 set)</p> 	<p>2. Adjusting bracket (1 pcs)</p> 	<p>3.V-plate (1pcs)</p> 
<p>4. M10*45 bolt assembly (1set)</p> 	<p>5. Eye bolt assembly (1set)</p> 	
<p>6.M10*160boltassembly (2sets)</p> 	<p>7. Clamping bar (1pcs)</p> 	<p>8. M10*30 bolt assembly (3sets)</p> 
<p>List of Accessory bag:</p> <p>9. Lubricant (1set) </p> <p>10. Finger-cot (1set) </p> <p>11. Installation Manual (1 copy)</p>		

Fig 2. Parts

3. Mounting Bracket Assembly

3.1 Assemble as shown in Figure 3

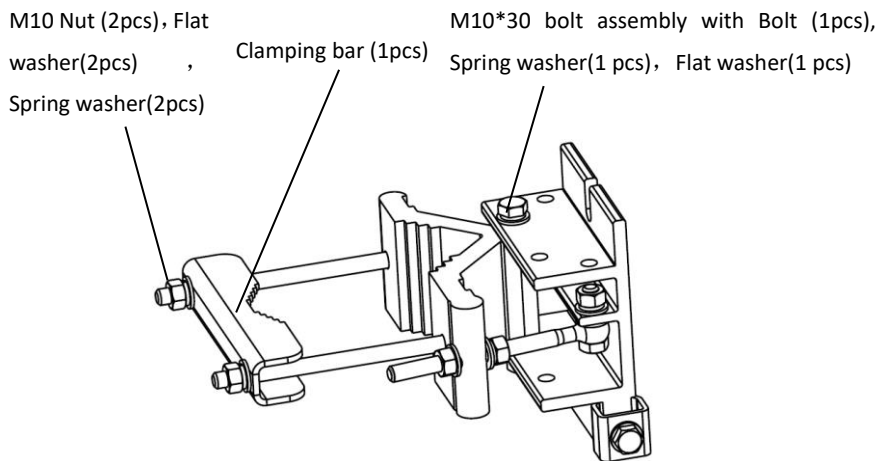
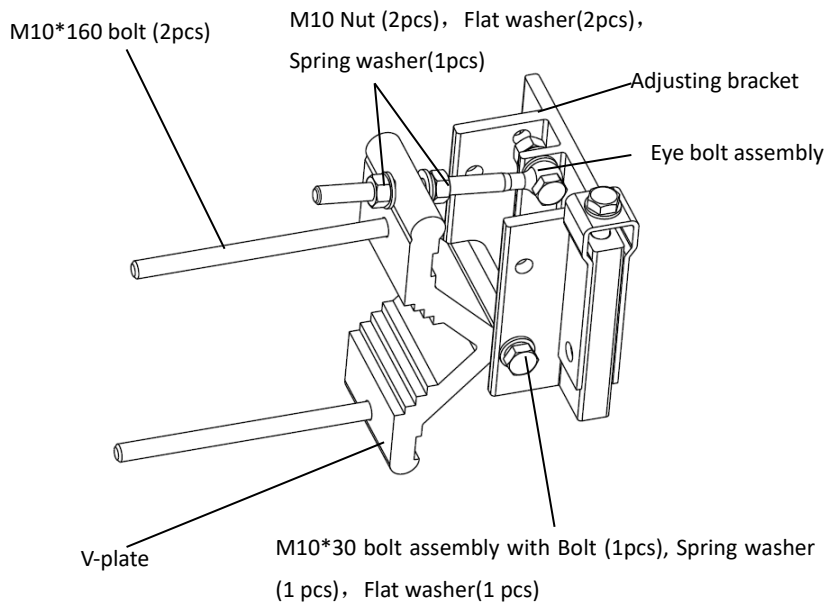


Figure 3. Mounting bracket assembly

3.2 Attach Mounting bracket to Reflector

Assemble the Mounting assembly and Reflector as shown in figure 3.

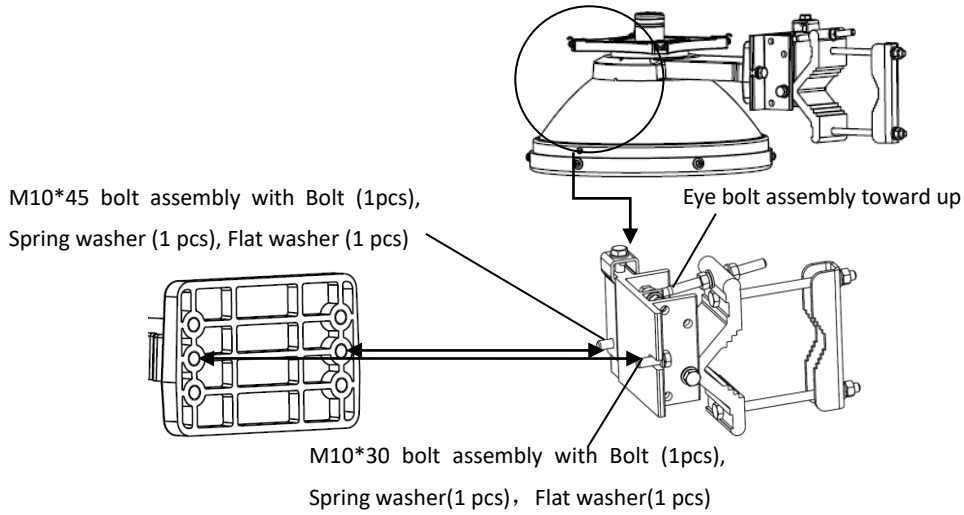
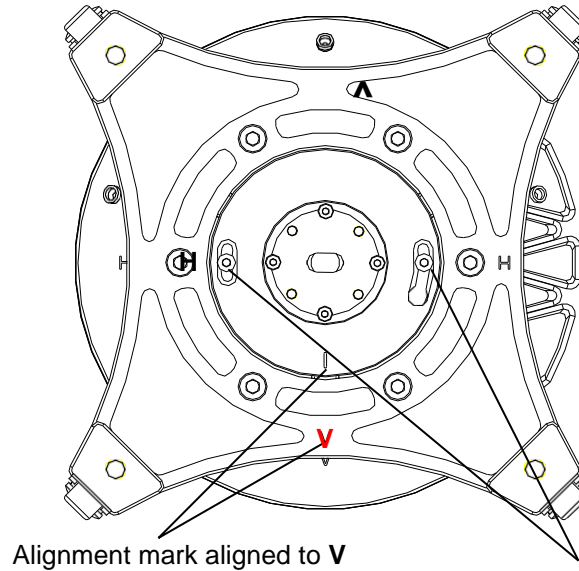


Figure 3b Mounting bracket installation

For antennas with a rectangular waveguide opening, the antenna polarization may need to be changed prior to installation. **Skip this step for antennas with a circular waveguide.** Confirm the required polarization before mounting and adjust as necessary. The detail is shown in figure 3 below.



For H pol, remove 2 screws, rotate transition and reinstall screws as shown in Fig 2b. For V pol no change needed.

Figure 3a: Vertical Polarization (Default)

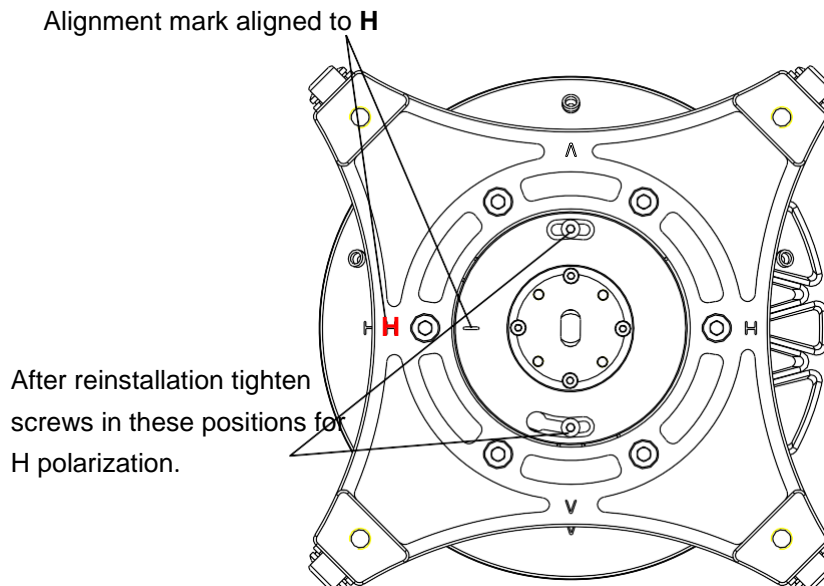
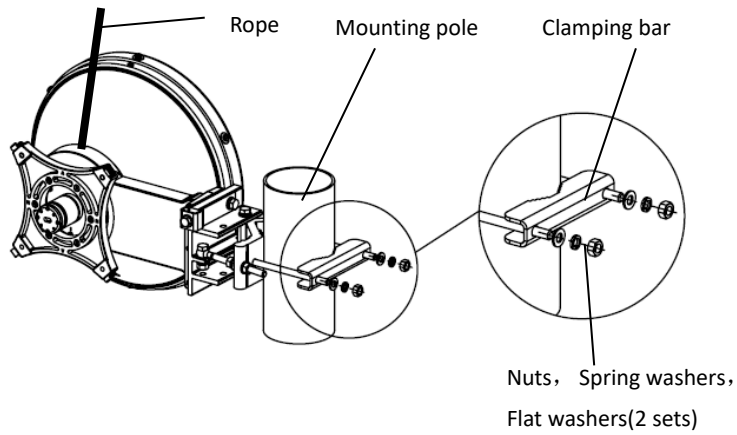


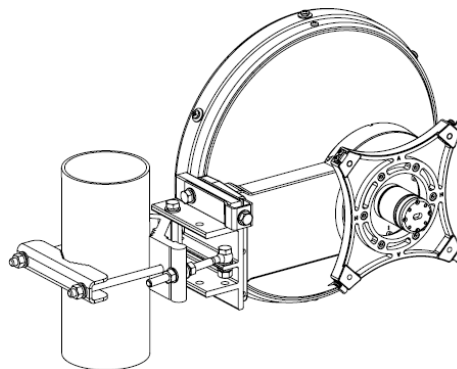
Figure 3b: Horizontal Polarization

4. Install Antenna to Mounting Pole

Install the antenna to the mounting pole as shown in Figure 4. Don't tighten all the nuts at this point. (There are two methods to mount antenna, customer can choose one method as needed.)



a. Antenna offset left



b. Antenna offset right

Figure 4 Antenna installation

5. Mount Horizontal (Azimuth) Adjustment

STEPS

- 1) Rough Align left and right and tighten Clamps (4 places)
- 2) Loosen Fine adjust Nuts (3 places)
- 3) Turn 2 nuts to adjust azimuth
- 4) Tighten all nuts after completing alignment

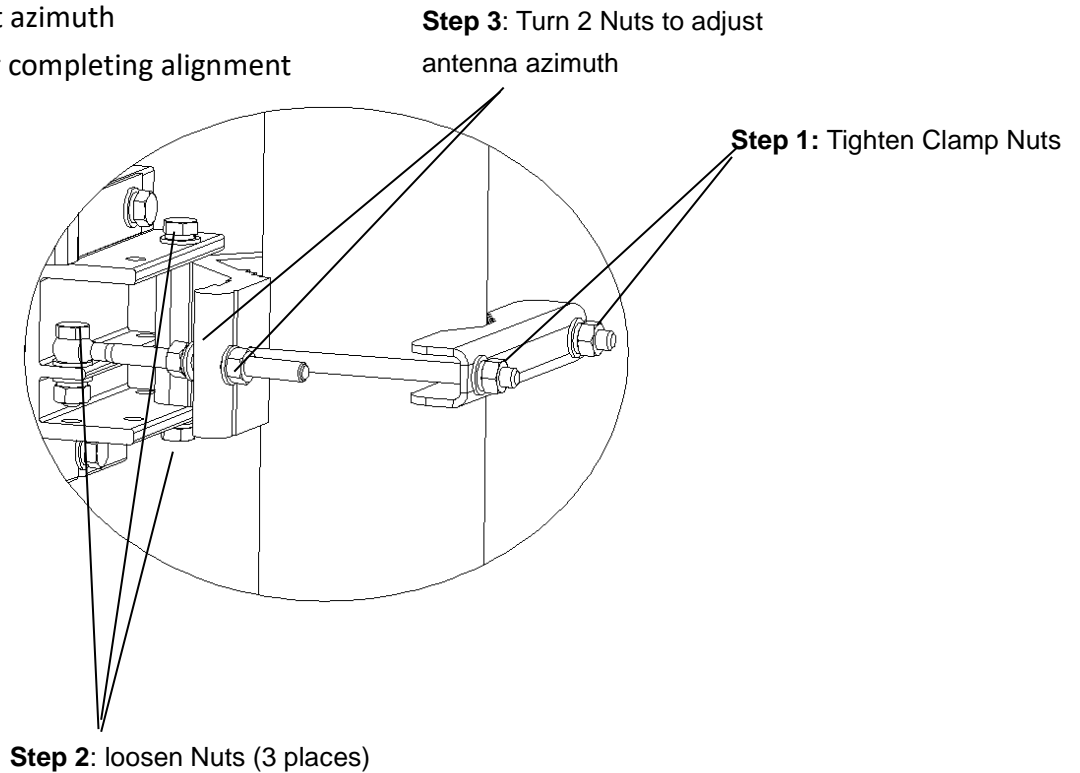


Figure 4a: Antenna Azimuth Adjust Steps

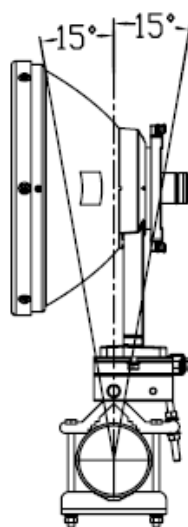
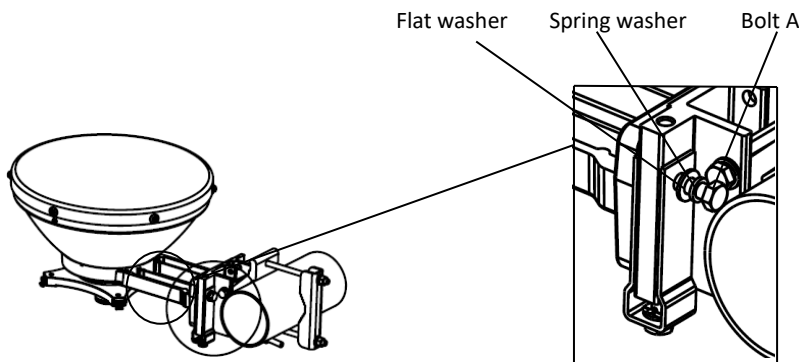


Figure 4b: Antenna Azimuth Adjustment Range (Top View)

5. Elevation Adjustment

STEPS

The default elevation adjustment range of antenna is +/-15 degrees. If the antenna is to be used with an elevation outside this range, move the position of Bolt “A” to hole A1 or A3, then adjust elevation as shown in Figure 5 . The antenna elevation adjustment range is +25° ~ -5° or +5° ~ -25° depending on the position of Bolt “A”. When the adjustment is finished, fasten all the nuts.



Mount the bolt A in one of the positions depending on the adjustment range needed.

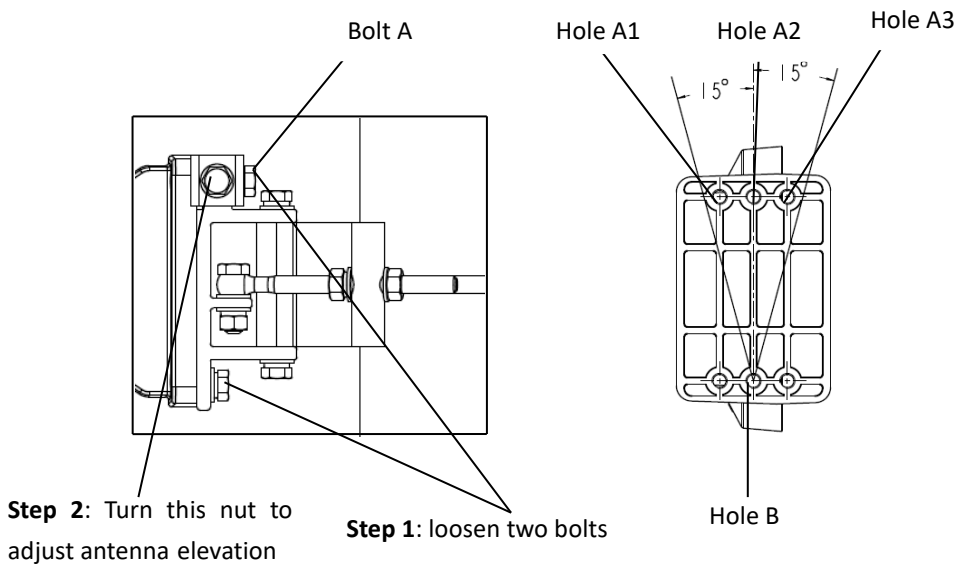


Figure 5: Antenna Elevation Adjustment

7. Finish Antenna Assembly

- 7.1 Tighten all the nuts and bolts after antenna assembly/alignment is done, following recommended torque specs (refer to the chapter 1.3).
- 7.2 Keep the antenna's bottom drain-hole open by removing the plug in the drain hole at the BOTTOM of the antenna. Keep the top one sealed. (Fig 7).

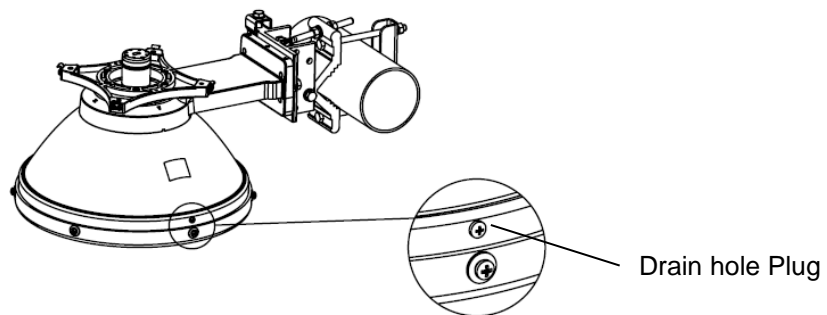
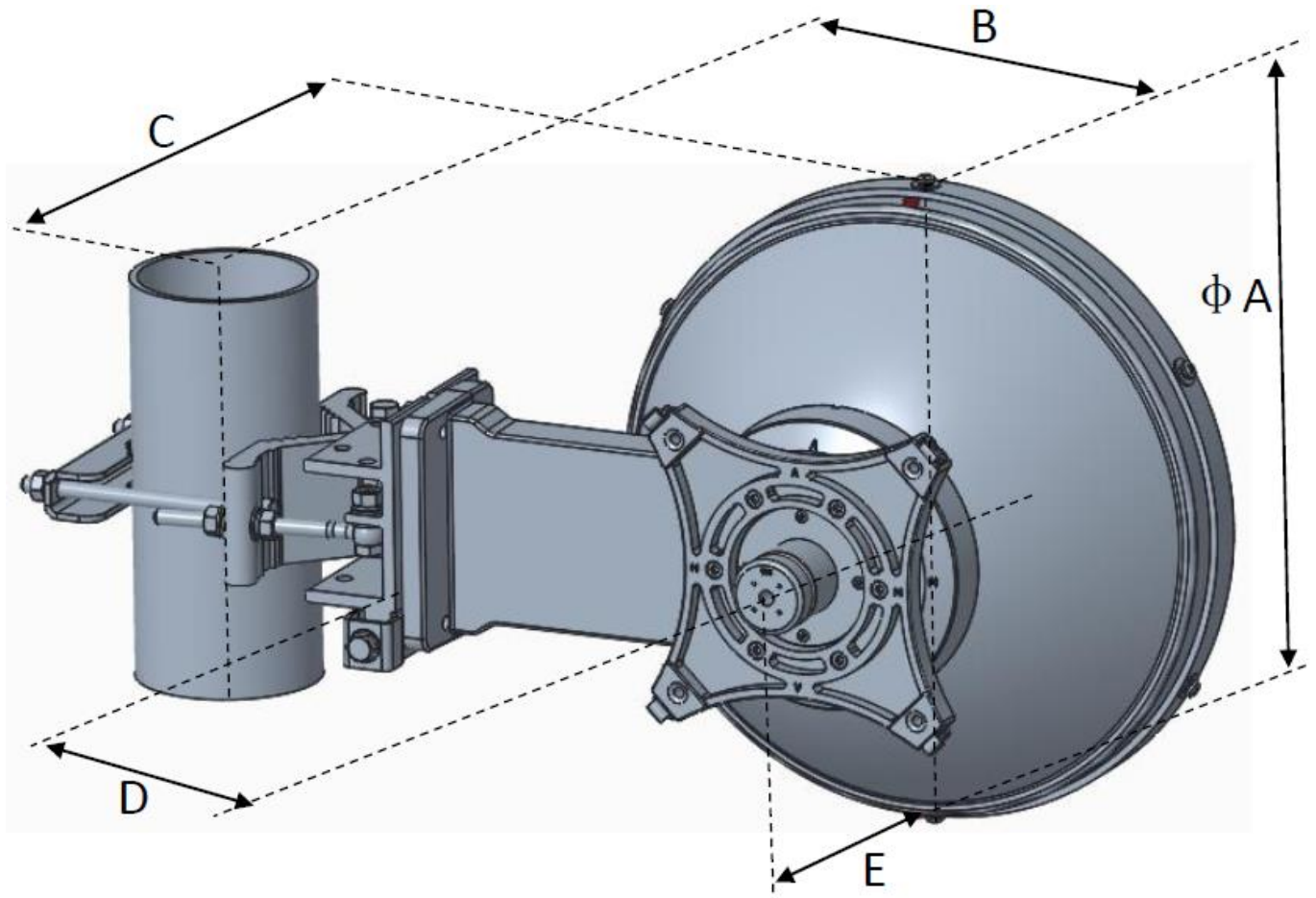


Fig 7: Remove Drain hole plug at BOTTOM ONLY

NOTE: Do not mount the antenna during rainy weather or when thunderstorms are nearby.

8. Mechanical Dimensions:



Dimensions (in/mm)	A	B	C	D	E
	15.5/ 393	16.3/ 415	5.4/ 137	9.6/ 244	9.9 / 251
Note: All size data above is for a pole diameter of 114 mm.					