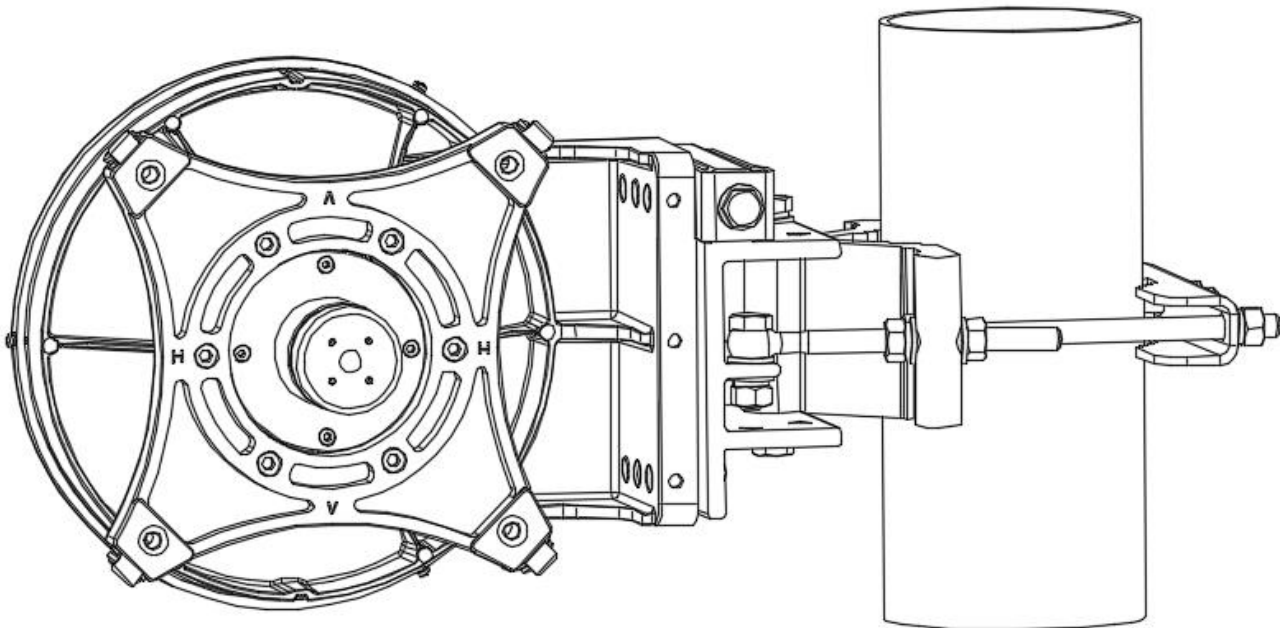


Installation Instructions

For 9 inch / 0.2m Diameter Ultra-High Performance Antenna

Model ADxxG-0-S2



Before Installation, please read the instructions carefully.

- ◆ This instruction book is for the installation of 0.2m ultra-high performance microwave antenna.
- ◆ Installation, maintenance and removal of antenna should be carried out by qualified personnel.
- ◆ To guarantee performance, the antenna system should be inspected once a year by qualified personnel.
- ◆ The mount for this antenna is designed for a 2.0-4.5 inch (50-114 mm) diameter pole.

CONTENTS



1. Installation Preparation	3
2. Open the Package and Identify Parts	4
3. Install the Antenna to the Mounting Pole	5
4. Mount Horizontal (Azimuth) Adjustment	6
5. Elevation Adjustment.....	7
6. Finish Antenna Assembly	8
7. Mechanical Dimensions:	9

1. Installation Preparation

1.1 Mounting Pole

The antenna should be attached to a Mounting Pole of diameter from 2 to 4.5 inches (50-114 mm).

1.2 Tools Required for Installation

No.	Name	Specification	Quantity
1	Spanner 	S=16	2 pcs
2	Torque spanner 		1 pc

1.3 Torque Parameters of Standard Parts

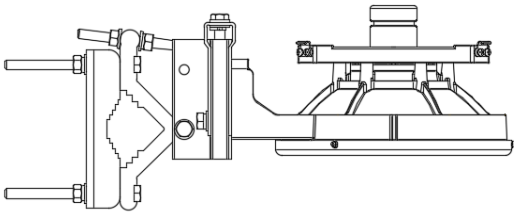
Please use the following torque specifications when assembling the antenna.

Table of Torque Parameters

NO.	Fastener Size	Torque (N·m)
1	M3	0.6
2	M4	1.3
3	M5	3
4	M6	5
5	M10	28

2. Open the Package and Identify Parts

1.Microwave Antenna (Reflector assembly,1 set)



List of Accessory bag:

2. Lubricant (1set)



3.Finger-cot (1set)



4. Installation Manual (1 copy)

Fig 2. 1 Parts

3. Install the Antenna to the Mounting Pole

Install the antenna to the mounting pole as shown in Figure 3.

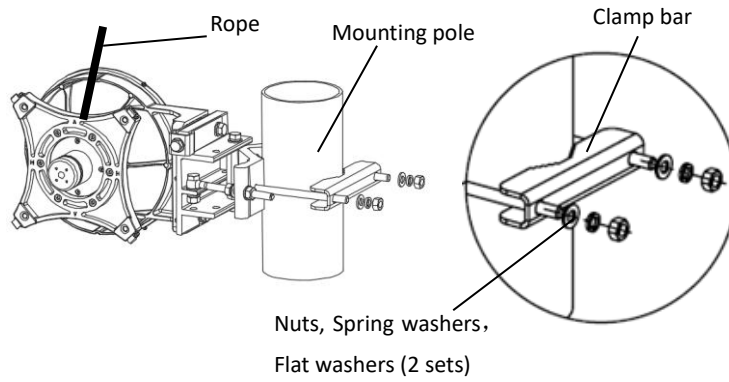


Figure 3a. Antenna offset right

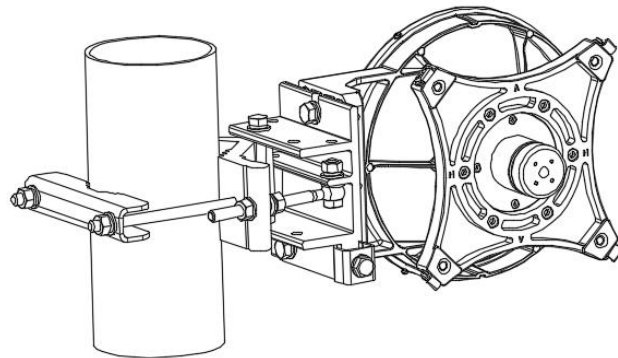


Figure 3b. Antenna offset right

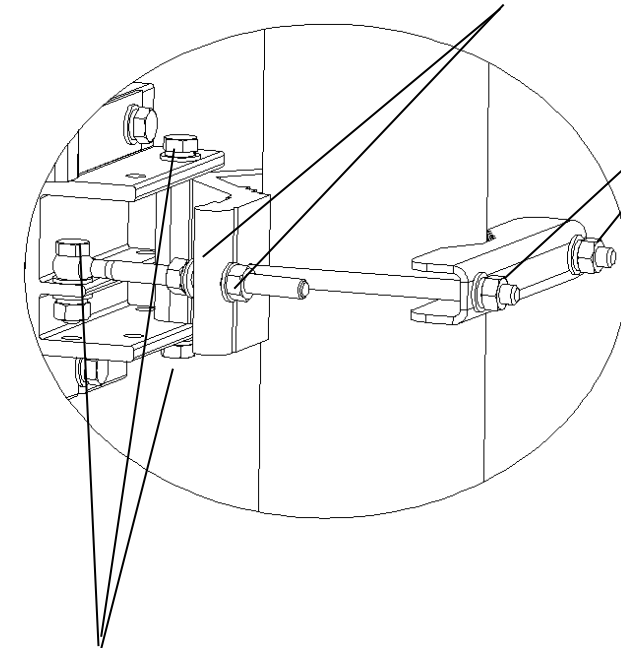
4. Mount Horizontal (Azimuth) Adjustment

STEPS

- 1) Rough Align left and right and tighten Clamps (4 places)
- 2) Loosen Fine adjust Nuts (3 places)
- 3) Turn 2 nuts to adjust azimuth
- 4) Tighten all nuts after completing alignment

Step 3: Turn 2 Nuts to adjust antenna azimuth

Step 1: Tighten Clamp Nuts



Step 2: loosen Nuts (3 places)

Figure 4a: Antenna Azimuth Adjust Steps

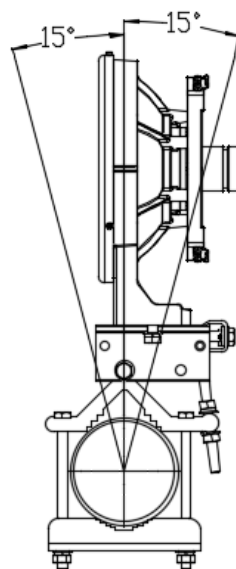
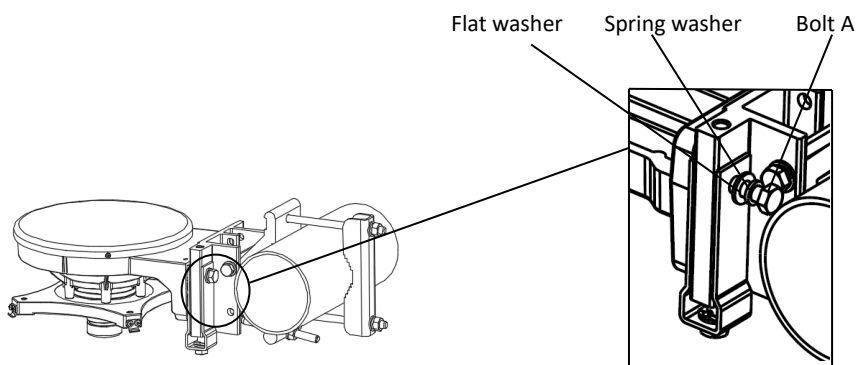


Figure 4b: Antenna Azimuth Adjustment Range (Top View)

5. Elevation Adjustment

STEPS

The default elevation adjustment range of antenna is +/-15 degrees. If the antenna is to be used with an elevation outside this range, move the position of Bolt “A” to hole A1 or A3, then adjust elevation as shown in Figure 5 . The antenna elevation adjustment range is +25° ~ -5° or +5° ~ -25° depending on the position of Bolt “A”. When the adjustment is finished, fasten all the nuts.



Mount the bolt A in one of the positions depending on the adjustment range needed.

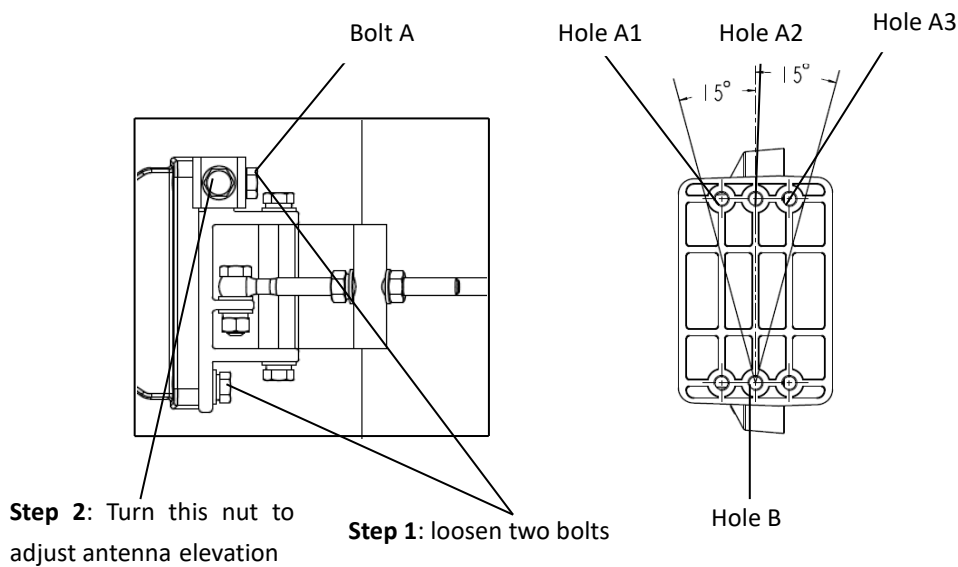


Figure 5: Antenna Elevation Adjustment

6. Finish Antenna Assembly

- 6.1 Tighten all the nuts and bolts after antenna assembly/alignment is done, following recommended torque specs (refer to section 1.3)
- 6.2 Keep the antenna's bottom drain-hole open by removing the plug in the drain hole at the **BOTTOM** of the antenna. Keep the top one sealed. (Fig 6).

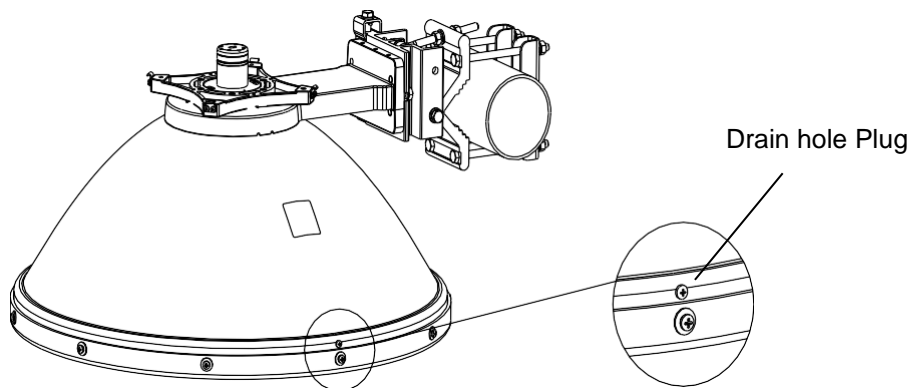
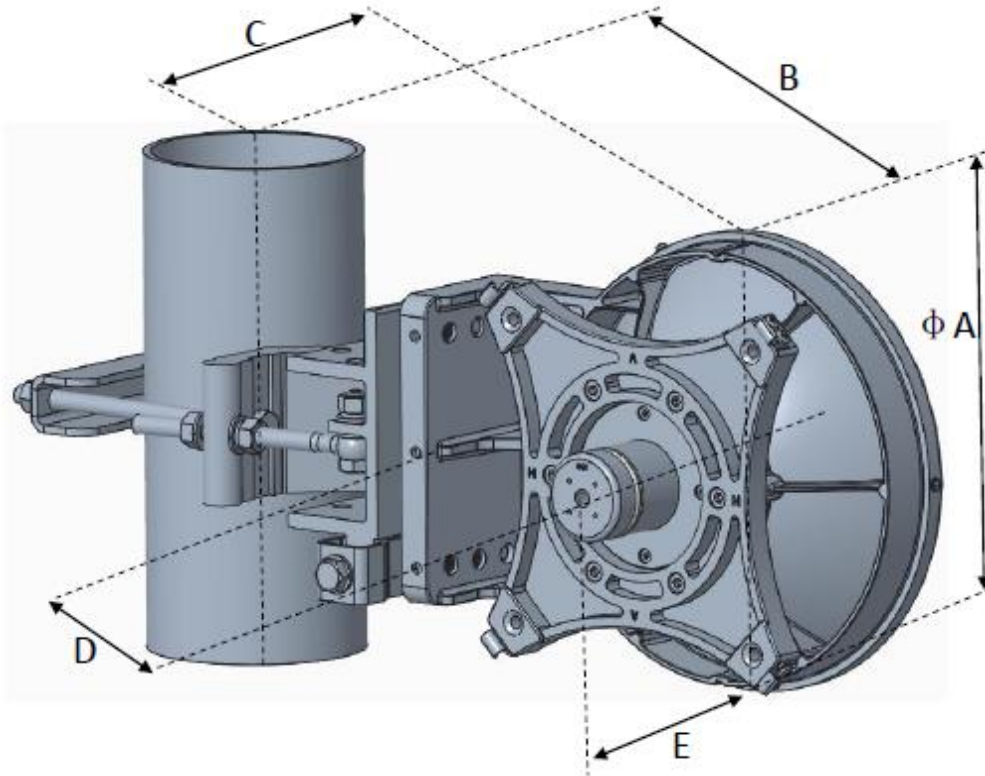


Fig 6: Remove Drain hole plug at BOTTOM ONLY

NOTE: Do not mount the antenna during rainy weather or when thunderstorms are nearby.

7. Mechanical Dimensions:



Dimensions (in/mm)	A	B	C	D	E
	9.45/ 240	12.6 / 319	1.1 / 27	5.8/ 148	5.9 / 151
Note: All size data above is for a pole diameter of 114 mm.					