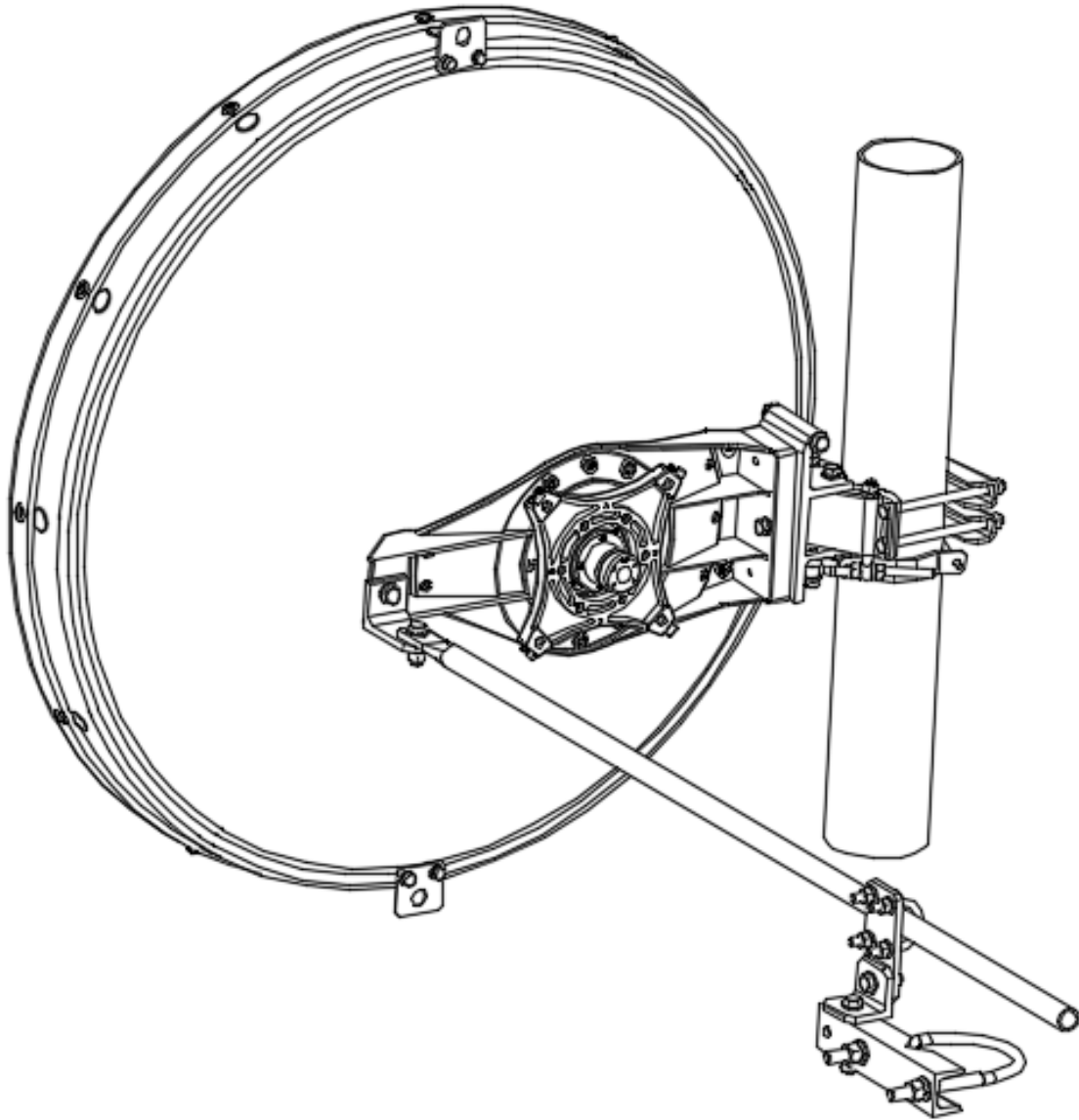


# Installation Instructions

For 3 foot / 0.9m Diameter Ultra High Performance Antenna

## Model ADxxG-3-S2



**Before Installation, please read the instructions carefully.**

- ◆ This instruction book covers the installation of 0.9m High performance microwave antenna.
- ◆ Installation, maintenance and removal of antenna should be done by qualified personnel.
- ◆ To guarantee performance, the antenna should be inspected once a year by a qualified personnel.



# CONTENTS

<b>1.0 Installation Preparation .....</b>	<b>1</b>
<b>2.0 Open the Package and Identify Parts .....</b>	<b>1</b>
<b>3.0 Antenna Mounting .....</b>	<b>2</b>
<b>4.0 Antenna adjustment .....</b>	<b>3</b>
<b>5.0 Mechanical Dimensions .....</b>	<b>5</b>

## 1.0 Installation Preparation

1.1 Mounting Pole- The antenna must be attached to the Mounting Pole approximately 4.5 inches (114 mm) in diameter.

### 1.2 Tools Required for Installation

No.	Name	Specification	Quantity
1	Spanner 	S=16	2pcs
2	Torque spanner 		1pcs


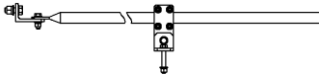
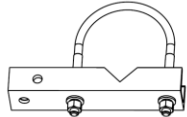


### 1.3 Torque Parameters of Standard Parts

Please use the following torque specifications when assembling the antenna.

**Table of Torque Parameters**

NO.	Fastener Size	Torque (N·m)
1	M10	22
2	M12	38
3	M14	60
4	M16	93

## 2.0 Open the Package and Identify Parts

1.Microwave Antenna (Reflector assembly,1 set) 	2.Azimuth strut assembly 
	3. Side strut assembly (1 set) 
List of Accessory bag: 4. Lubricant (1set) 	5.Finger-cot (1set) 
6. Installation Manual (1 copy)	

**Figure 1**

### 3.0 Antenna Mounting

#### 3.1 Anti-slide assembly installation

Install the anti-slide bracket on the mounting pole before installing antenna as shown in Figure 2

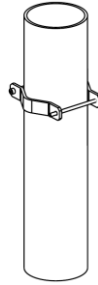


Figure 2

#### 3.2 Install antenna to the mounting pole

Choose which side of pole antenna is to be mounted. Install antenna to mounting pole as shown in Figure 3a and 3 b. Hoist antenna using provided hoisting loop. Do not tighten all nuts at this point

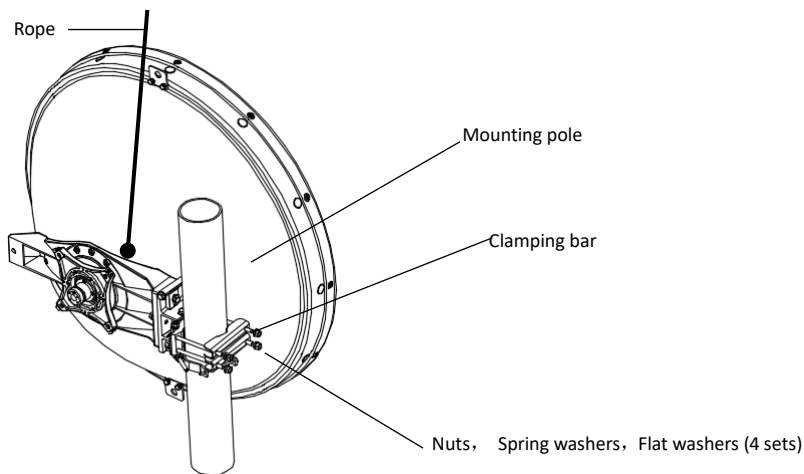


Figure 3a. Antenna offset left

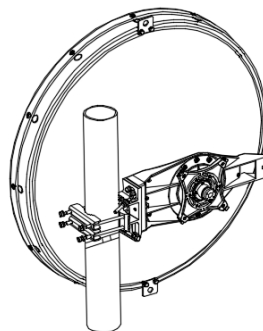
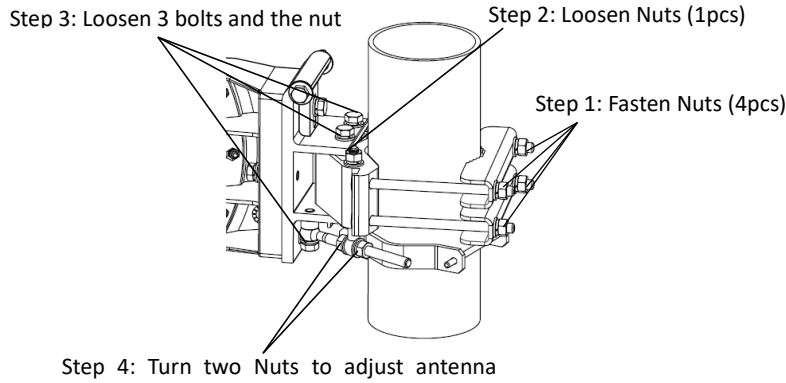


Figure 3b. Antenna offset right

## 4.0 Antenna adjustment

### 4.1 Azimuth adjustment

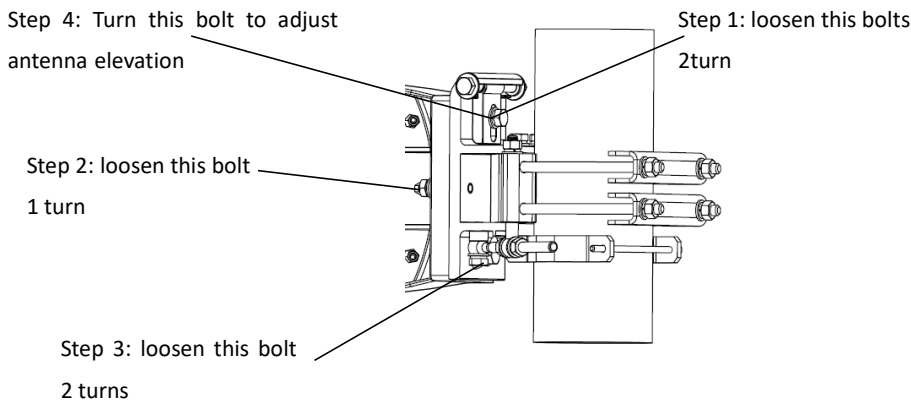
Follow the steps in figure 4 to adjust antenna azimuth. When the adjustment is finished fasten all the nuts and bolts. The antenna azimuth adjustment range is  $\pm 15^\circ$ .



**Figure 4** Azimuth Adjustment

### 4.2 Elevation adjustment

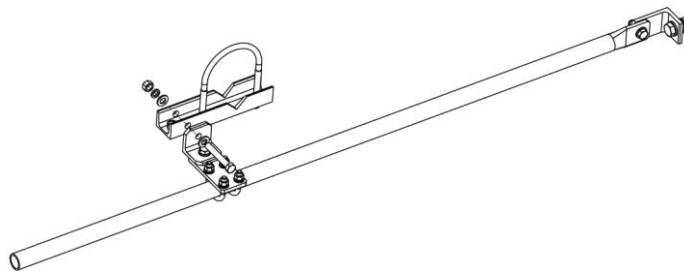
Follow the steps in figure 5 to adjust antenna elevation. When the adjustment is finished, fasten all the bolts. The antenna elevation adjustment range is  $\pm 15^\circ$ .



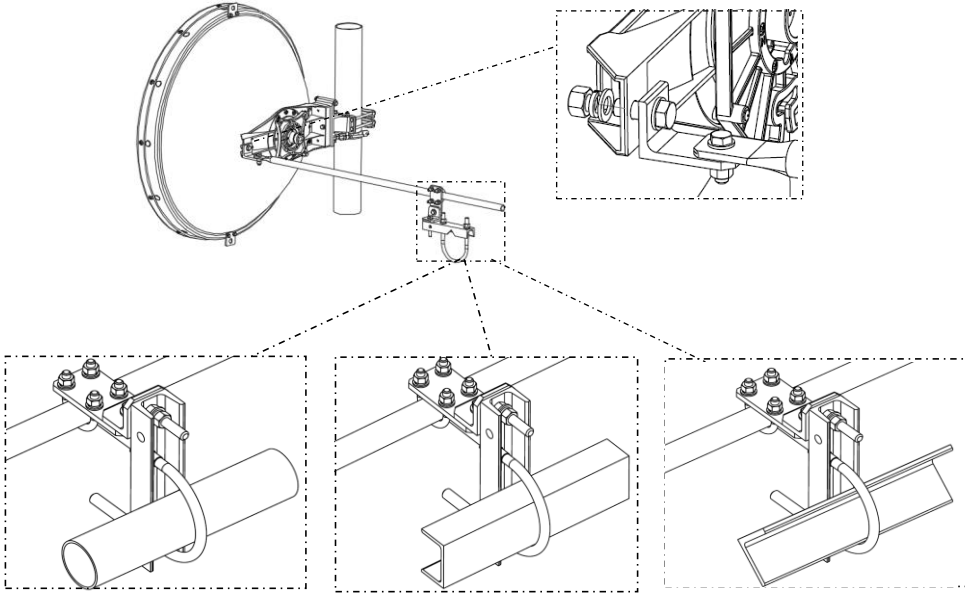
**Figure 5** Elevation adjustment

### 4.3 Install and adjust the Azimuth strut (Side Strut) Assembly

4.3.1 The strut should be mounted to a tower leg as shown in the figures below.

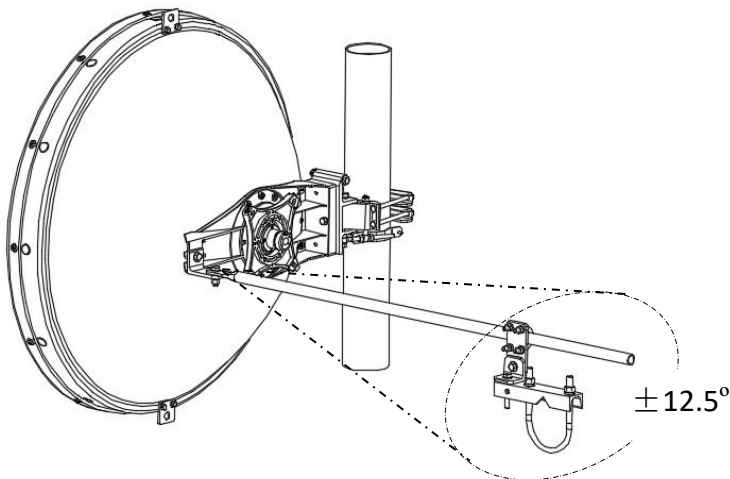


**Figure 6** Azimuth strut assembly



**Figure 7** Install azimuth strut assembly

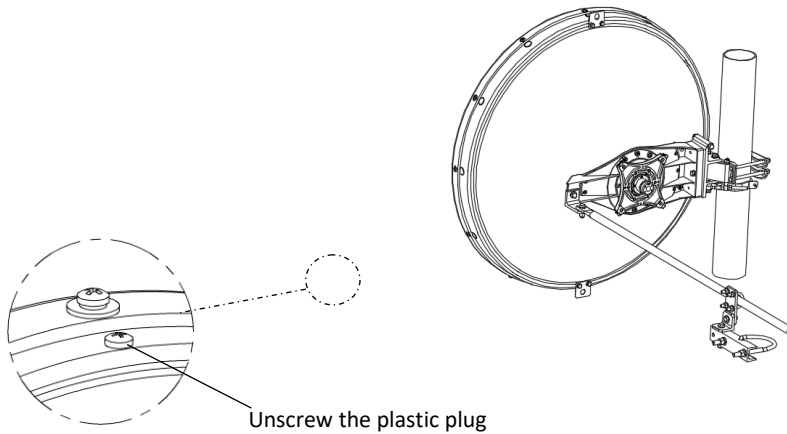
Azimuth strut assembly installation range is shown in Figure 8:



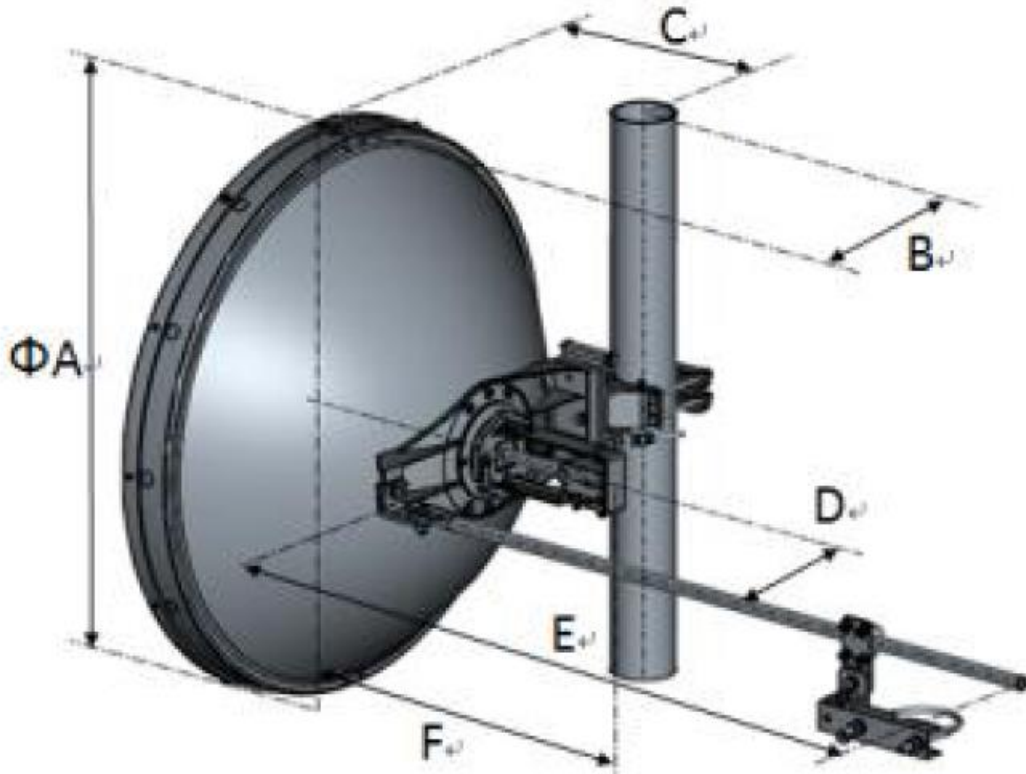
**Figure 8** Max angle of strut installation

**4.4 Unscrew the plastic plug**

Make sure every part is installed correctly, then unscrew plastic plug in the plug hole at the very bottom of the antenna.



## 5.0 Mechanical Dimensions



Dimensions (in/mm)	
A	38.75 / 984
B	15.63 / 397
C	15.63 / 397
D	10.51 / 267
E	55.12 / 1400
F	26.89 / 683