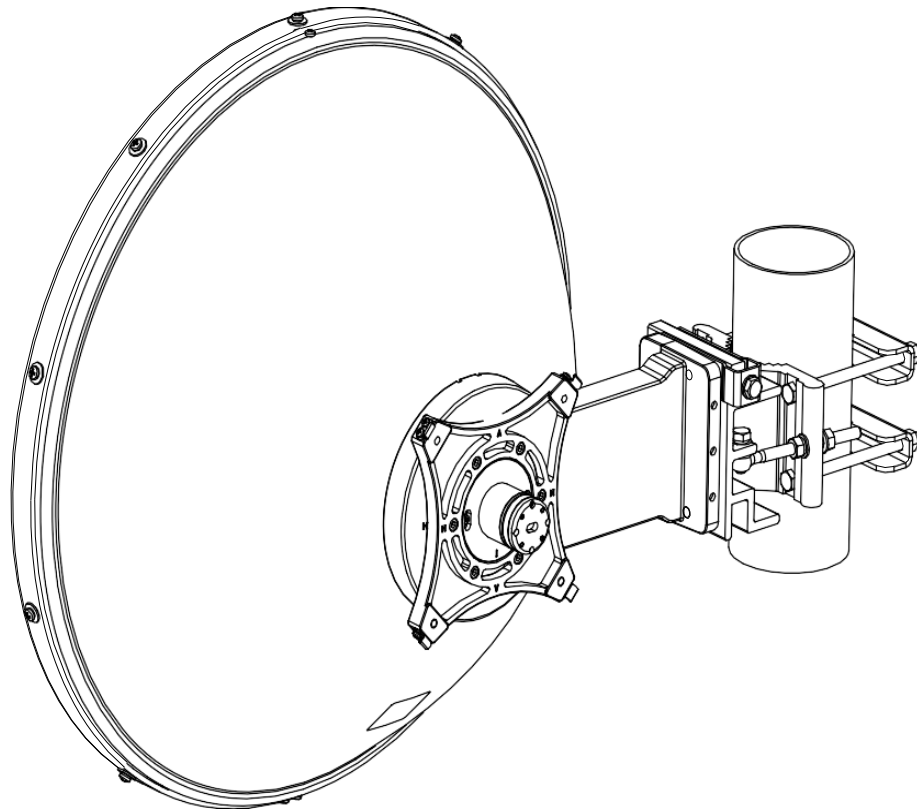


# Installation Instructions

For 2 foot / 0.6m Diameter Ultra-High Performance Antenna

## Model ADxxG-2-S2



**Before Installation, please read the instructions carefully.**

- ◆ This instruction book is for the installation of 0.6m ultra-high performance microwave antenna.
- ◆ Installation, maintenance and removal of antenna should be carried out by qualified personnel.
- ◆ To guarantee performance, the antenna system should be inspected once a year by qualified personnel.
- ◆ The mount for this antenna is designed for a 2.0-4.5 inch (50-114 mm) diameter pole.

## CONTENTS



1. Installation Preparation .....	3
2. Open the Package and Identify Parts .....	4
3. Adjust Antenna Polarization .....	5
4. Install Antenna to Mounting Pole .....	6
5. Mount Horizontal (Azimuth) Adjustment .....	7
6. Elevation Adjustment.....	8
7. Finish Antenna Assembly .....	10
8. Mechanical Dimensions: .....	11

## 1. Installation Preparation

### 1.1 Mounting Pole

The antenna should be attached to a Mounting Pole of diameter from 2 to 4.5 inches (50-114 mm).

### 1.2 Tools Required for Installation

No.	Name	Specification	Quantity
1	Spanner 	S=16	2 pcs
2	Torque spanner 		1 pc

### 1.3 Torque Parameters of Standard Parts

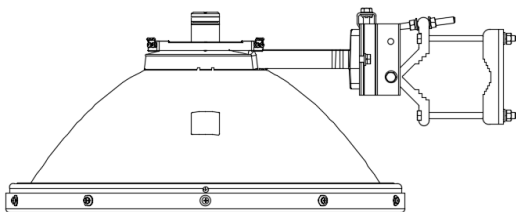
Please use the following torque specifications when assembling the antenna.

**Table of Torque Parameters**

NO.	Fastener Size	Torque (N·m)
1	M3	0.6
2	M4	1.3
3	M5	3
4	M6	5
5	M10	28

## 2. Open the Package and Identify Parts

1.Microwave Antenna (Reflector assembly,1 set)



List of Accessory bag:

2. Lubricant (1set)



3.Finger-cot (1set)

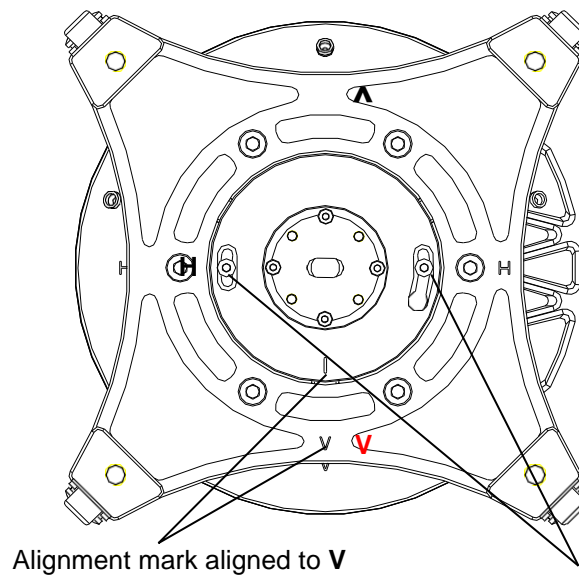


4. Installation Manual (1 copy)

**Fig 2. 1 Parts**

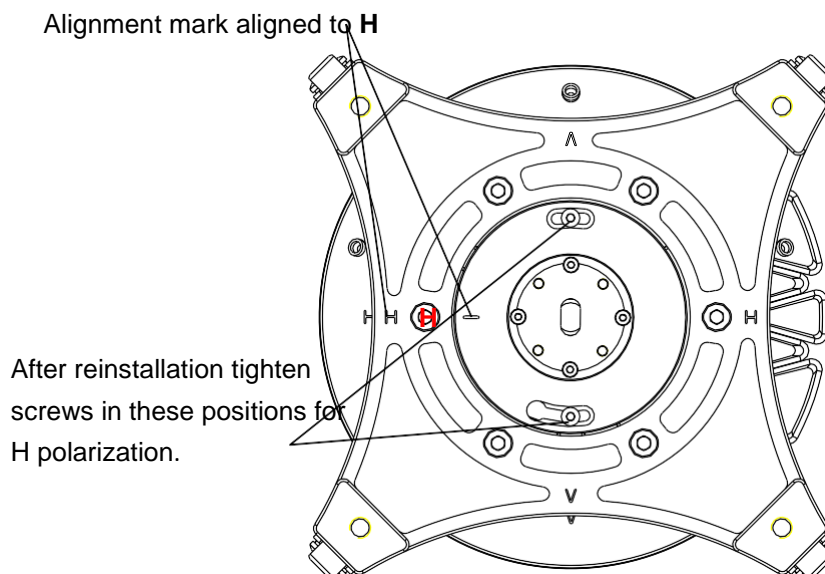
### 3. Adjust Antenna Polarization

For antennas with a rectangular waveguide opening, the antenna polarization may need to be changed prior to installation. Confirm the required polarization before mounting and adjust as necessary. The detail is shown in figure 3 below.



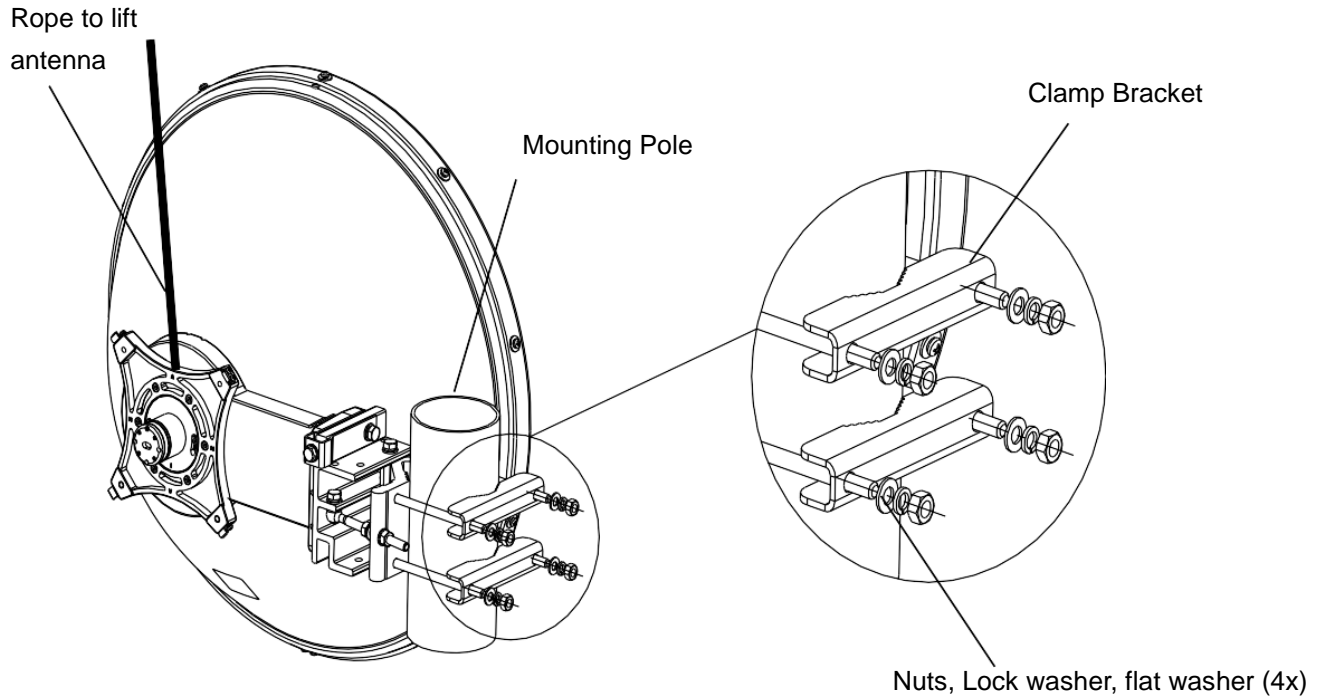
For H pol, remove 2 screws, rotate transition and reinstall screws as shown in Fig 2b. For V pol no change needed.

**Figure 3a: Vertical Polarization (Default)**

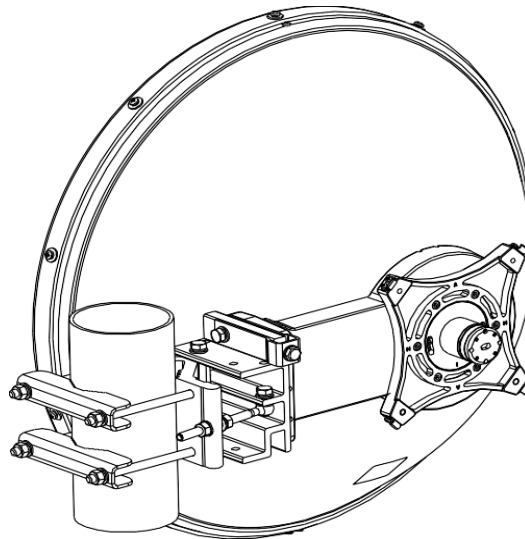


**Figure 3b: Horizontal Polarization**

## 4. Install Antenna to Mounting Pole



**Figure 4a: Antenna Offset Left**

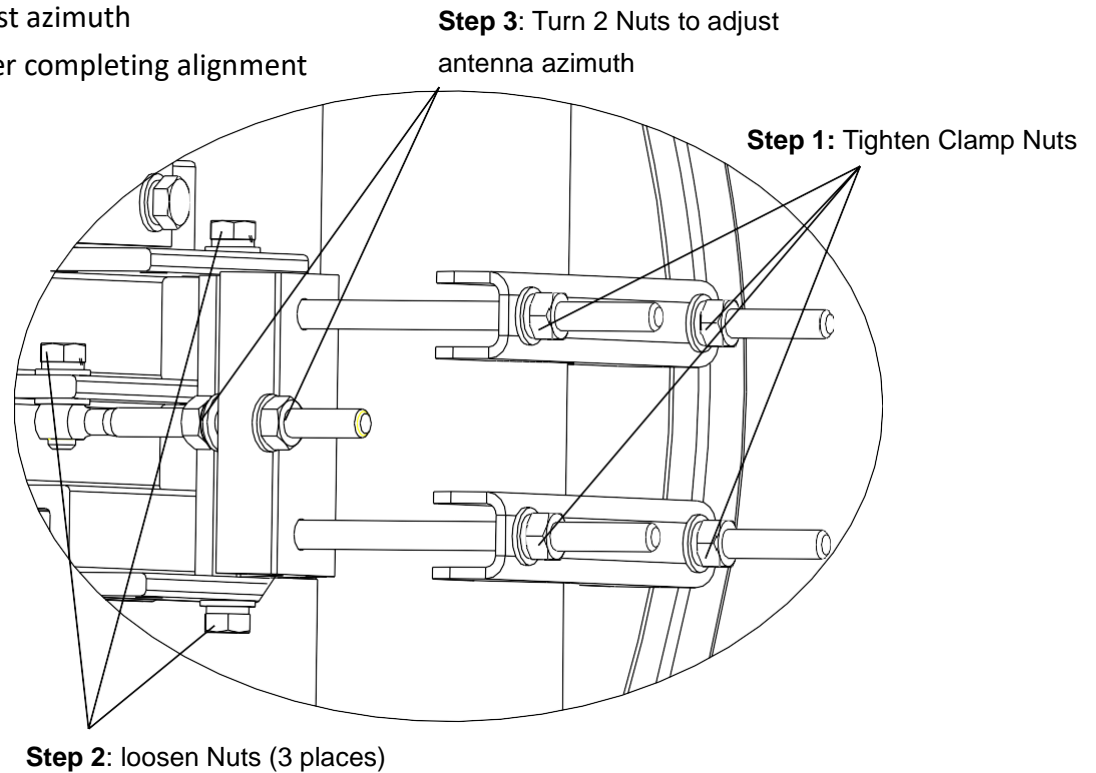


**Figure 4b: Antenna Offset Right**

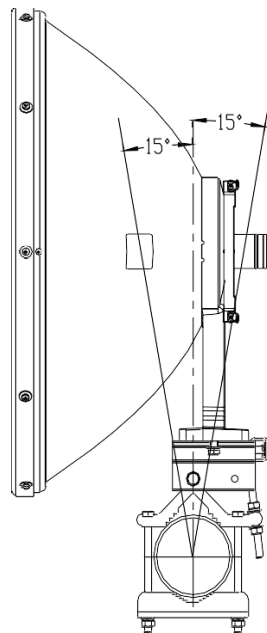
## 5. Mount Horizontal (Azimuth) Adjustment

### STEPS

- 1) Rough Align left and right and tighten Clamps (4 places)
- 2) Loosen Fine adjust Nuts (3 places)
- 3) Turn 2 nuts to adjust azimuth
- 4) Tighten all nuts after completing alignment



**Figure 5a: Antenna Azimuth Adjust Steps**

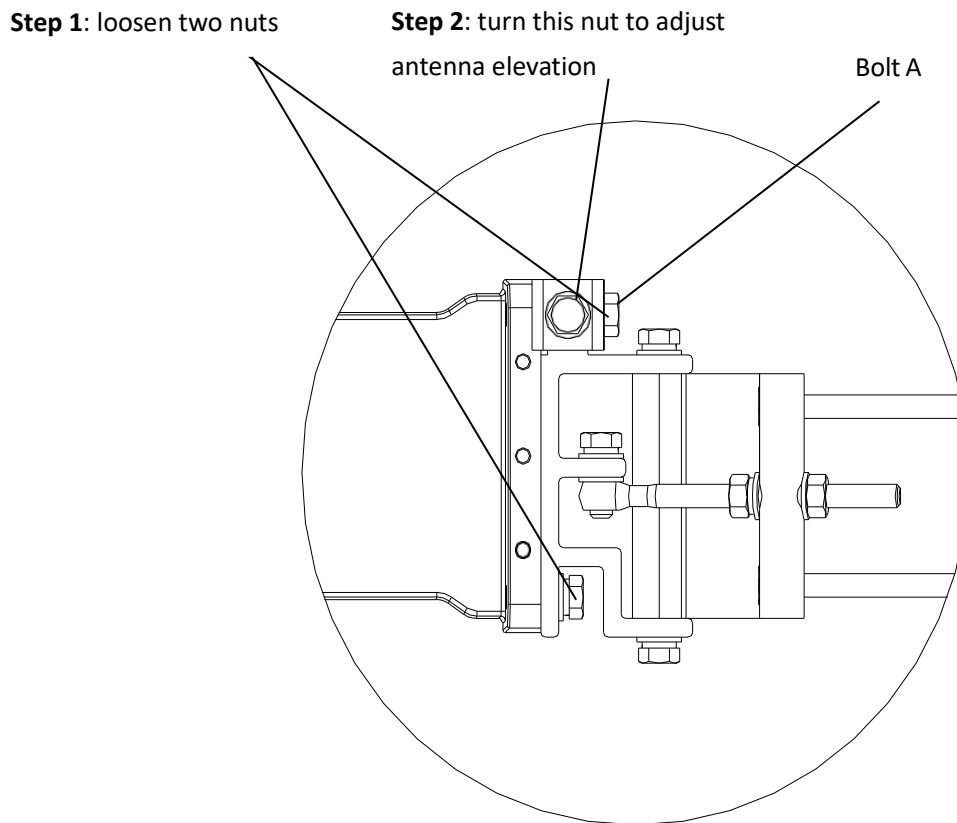


**Figure 5b: Antenna Azimuth Adjustment Range (Top View)**

## 6. Elevation Adjustment

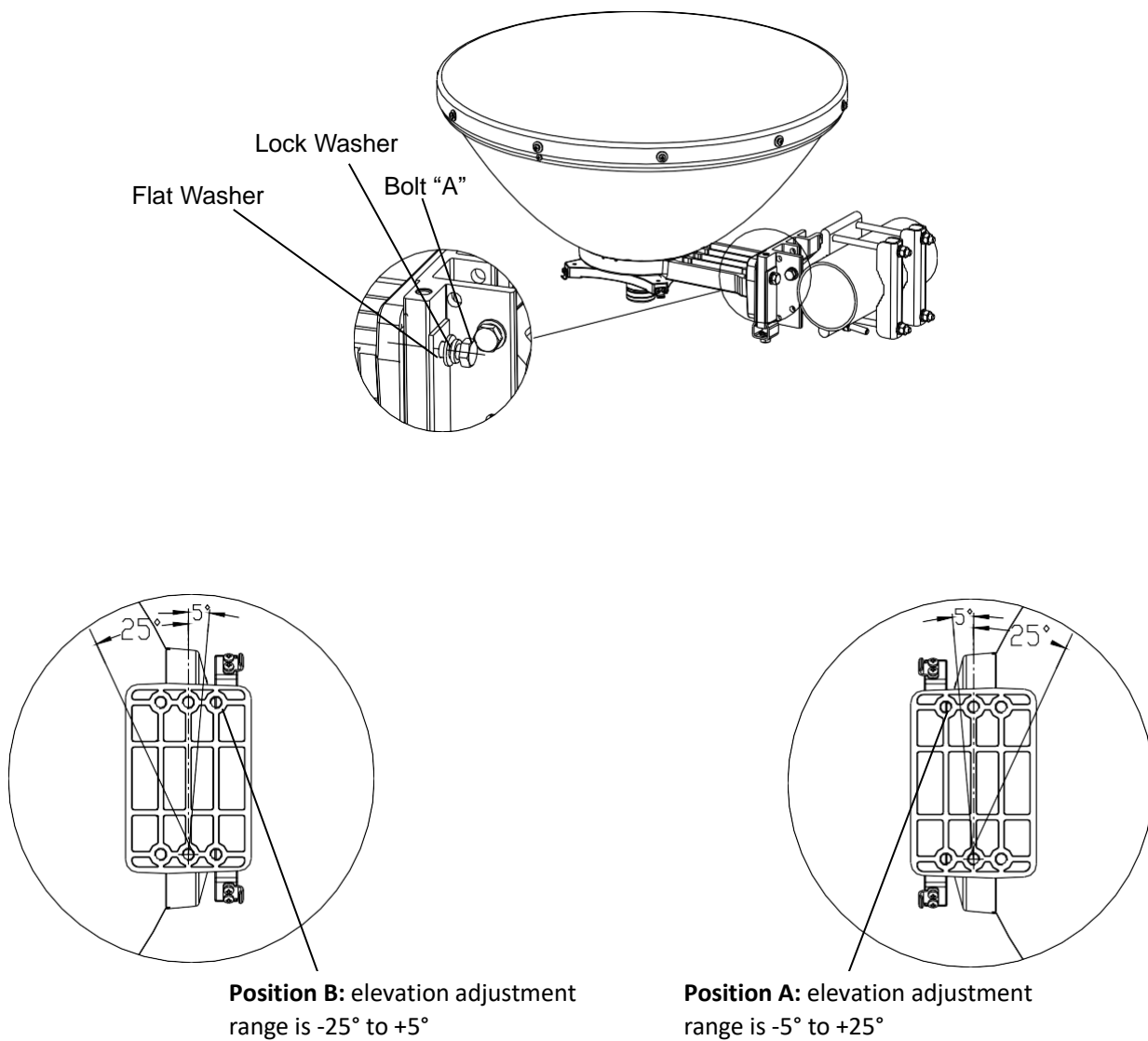
### STEPS

Adjust antenna elevation by first moving the position of bolt "A" to position A or B as shown in Figure 6b, then adjusting elevation as shown in Figure 6a . The antenna elevation adjustment range is  $+25^{\circ} \sim -5^{\circ}$  or  $+5^{\circ} \sim -25^{\circ}$  depending on the Position of the Bolt "A". When the adjustment is finished, fasten all the nuts.



**Figure 6a: Antenna Elevation Adjustment**

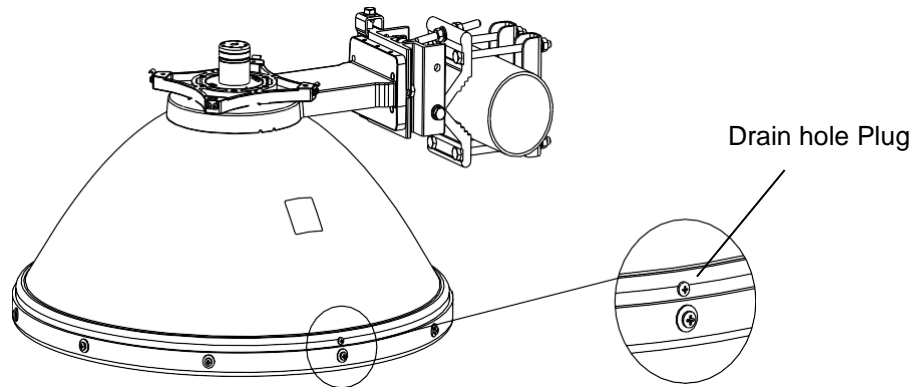




**Figure 6b: Bolt "A" mounting**

## 7. Finish Antenna Assembly

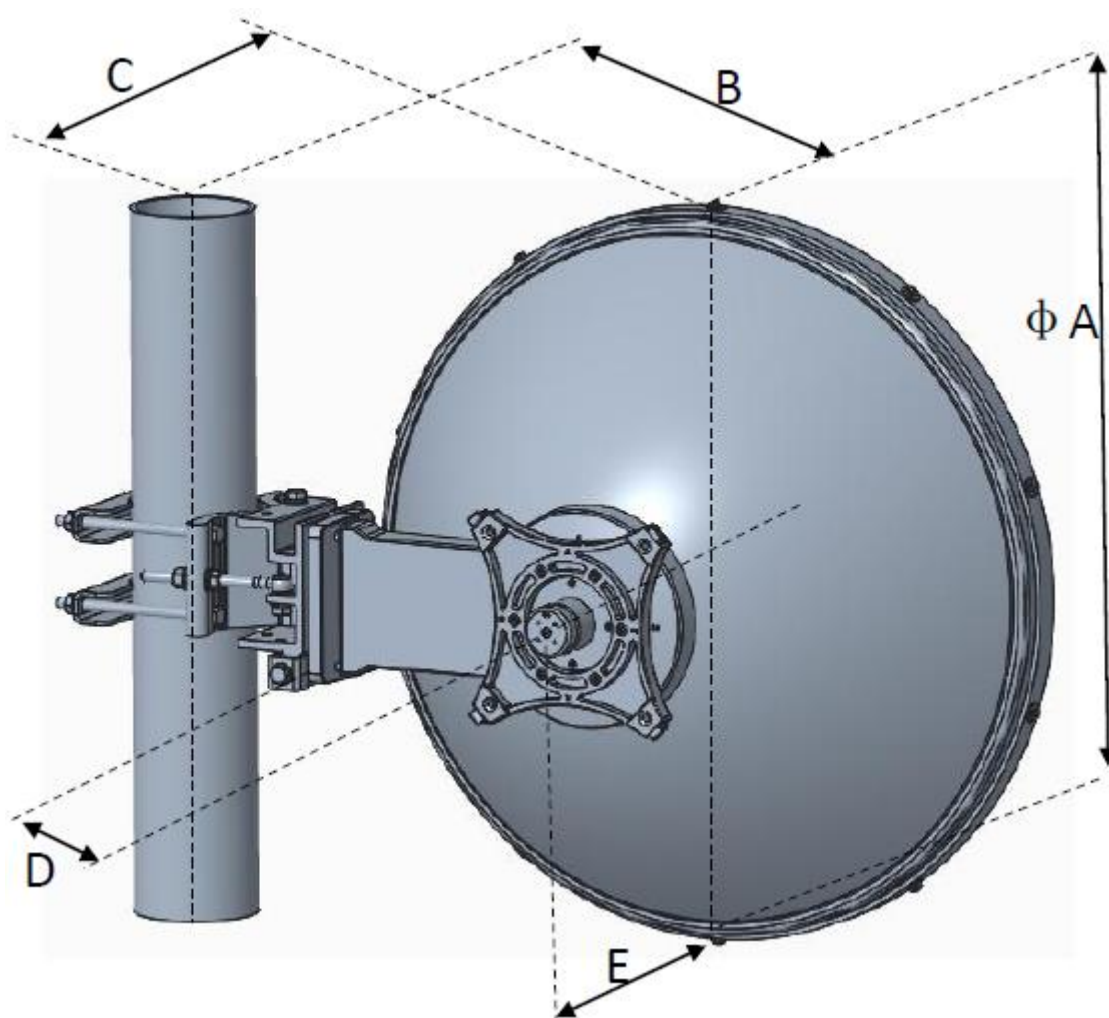
- 7.1 Tighten all the nuts and bolts after antenna assembly/alignment is done, following recommended torque specs (refer to the chapter 1.3)
- 7.2 Keep the antenna's bottom drain-hole open by removing the plug in the drain hole at the **BOTTOM** of the antenna. Keep the top one sealed. (Fig 7).



**Fig 7: Remove Drain hole plug at BOTTOM ONLY**

**NOTE:** Do not mount the antenna during rainy weather or when thunderstorms are nearby.

## 8. Mechanical Dimensions:



Dimensions (in/mm)	A	B	C	D	E
	26.5 / 673	16.5 / 418	9.8 / 249	10.2 / 260	14.1 / 358
Note: All size data above is for a pole diameter of 114 mm.					