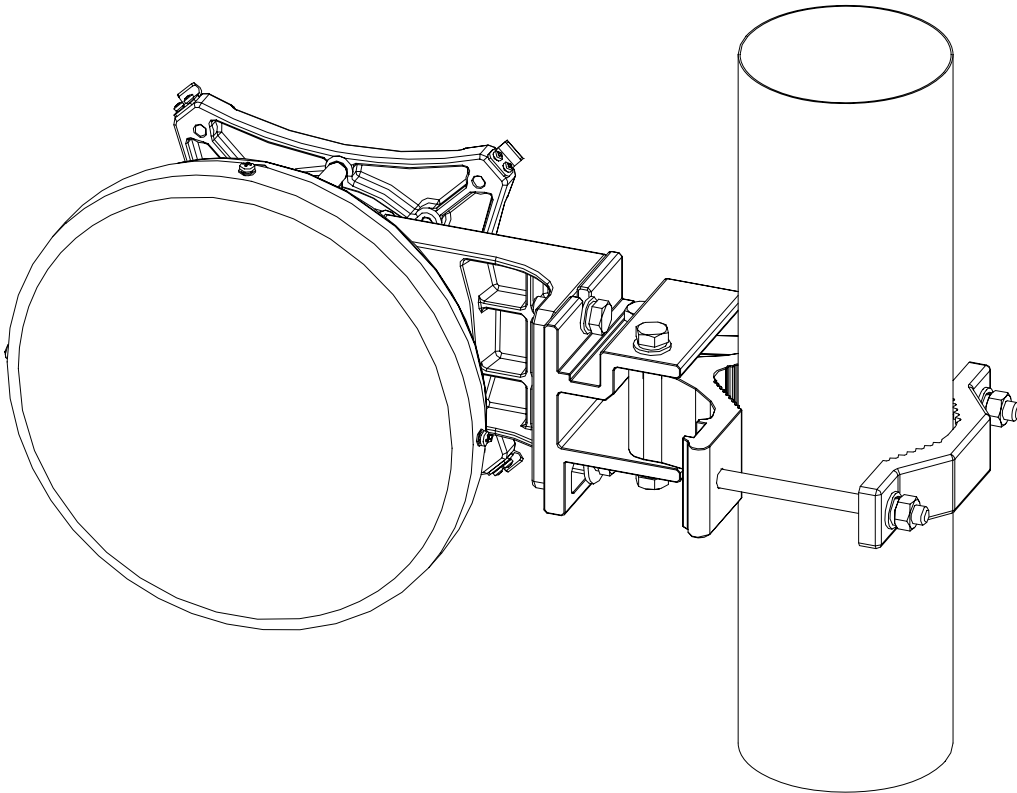


Installation Instructions

For 0.2m Ultra-high Performance Antenna

Model ADxxG-0-T2



Before Installation, please read these instructions carefully.

- ◆ This instruction guide is for the installation of 8 inch / 0.2m diameter ultra-high performance microwave antenna.
- ◆ Installation, maintenance and removal of the antenna should be done by qualified personnel.
- ◆ To guarantee performance, the antenna system should be inspected once a year by qualified personnel

CONTENTS

1. Installation Preparation	1
1.1 Mounting Pole	1
1.2 Tools Required for Installation.....	1
1.3 Torque Settings of Standard Parts	1
2. Open the Package and Identify Parts.....	1
3. Select Elevation Range to Use	2
4. Connect Antenna Assembly and Mounting Bracket	2
5. Antenna Installation on Tower	3
6. Antenna Adjustment.....	4
6.1 Azimuth Adjustment	4
6.2 Elevation Adjustment	4
6.3 Tighten and Inspect.....	5
7.0 Mechanical Dimensions	5

1. Installation Preparation

1.1 Mounting Pole

The microwave antenna can be fixed to a Mounting Pole of diameter from 50mm to 114mm.

1.2 Tools Required for Installation

17-19 mm Open-end Spanners (*Used for bolt M10*)

3mm L-Spanner (*Used for Bolt M4*)

Torque Spanner (*Recommended*)

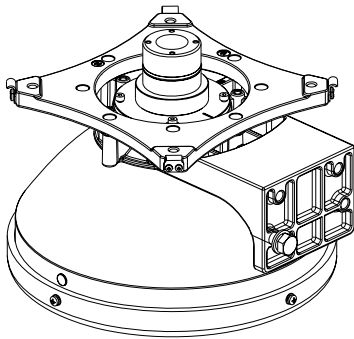
1.3 Torque Settings of Standard Parts

Please use the following torque specifications when assembling the antenna.

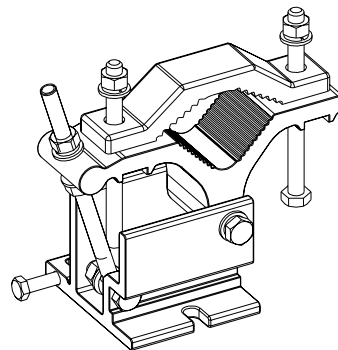
Table of Torque Parameters

NO.	Part Size	Torque (N·m)
1	M3	0.6
2	M4	1.3
3	M5	3
4	M6	5
5	M8	13
6	M10	28

2. Open the Package and Identify Parts



Antenna Assembly (1 set)



Mounting Bracket (1 set)

Fig 2.1 Parts List

3. Select Elevation Range to Use

Based on the installation up/downtilt requirements, select which mounting holes to use on the antenna, based on the chart below: First, loosen the bolts ⑤. Next, select the correct holes for the range of adjustment required based on the following table. Last, tighten bolts ⑤ after adjustment is complete.

Use Bolt holes	Range of Adjustment
①&③ (default)	-15° to +15°
①&④	+10° to +40°
②&③	-40° to -10°

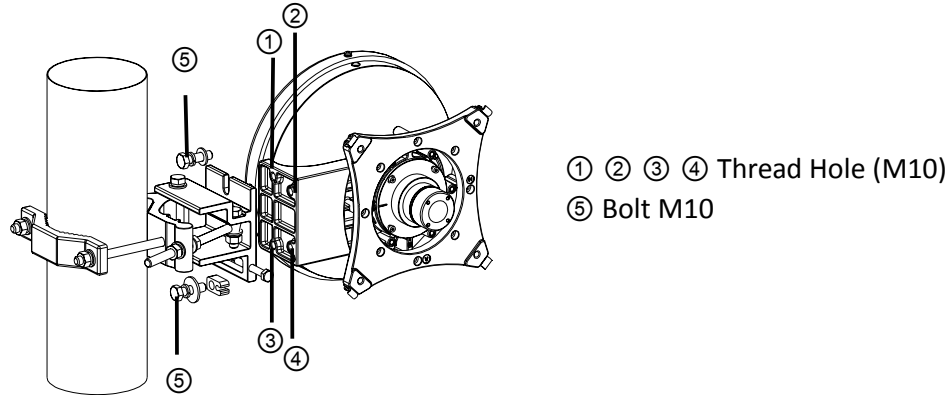
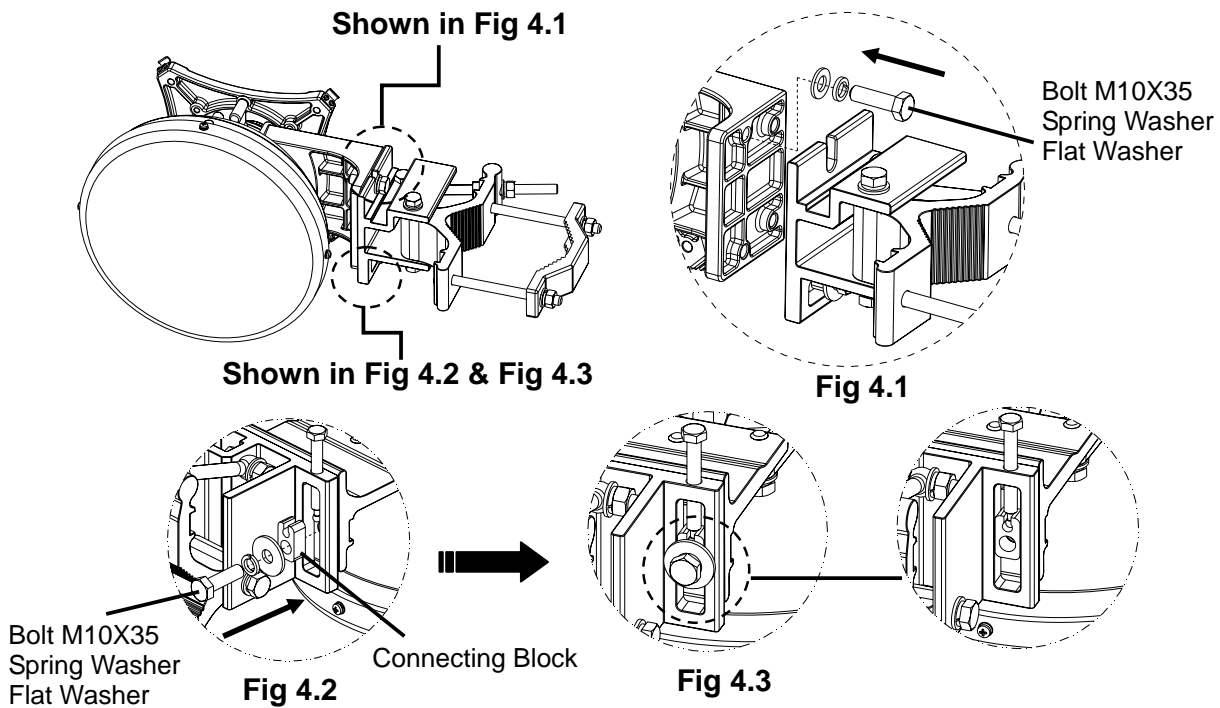


Fig 3.1

4. Connect Antenna Assembly and Mounting Bracket



- 4.1 Loosen M10X35 bolt (2 pcs) from Antenna Assembly.
- 4.2 Use bolt M10X35 (2 pcs) to connect Hanging Bracket and Antenna Assembly in the arrow's direction (shown in Fig 4.1 & Fig 4.2 & Fig 4.3).
- 4.3 Tighten all the standard parts.

5. Antenna Installation on Tower

The antenna is suitable for mounting on the right hand or left hand side of the pole. The diagram in Fig 5.1 shows the mounting details for left hand and right hand use.

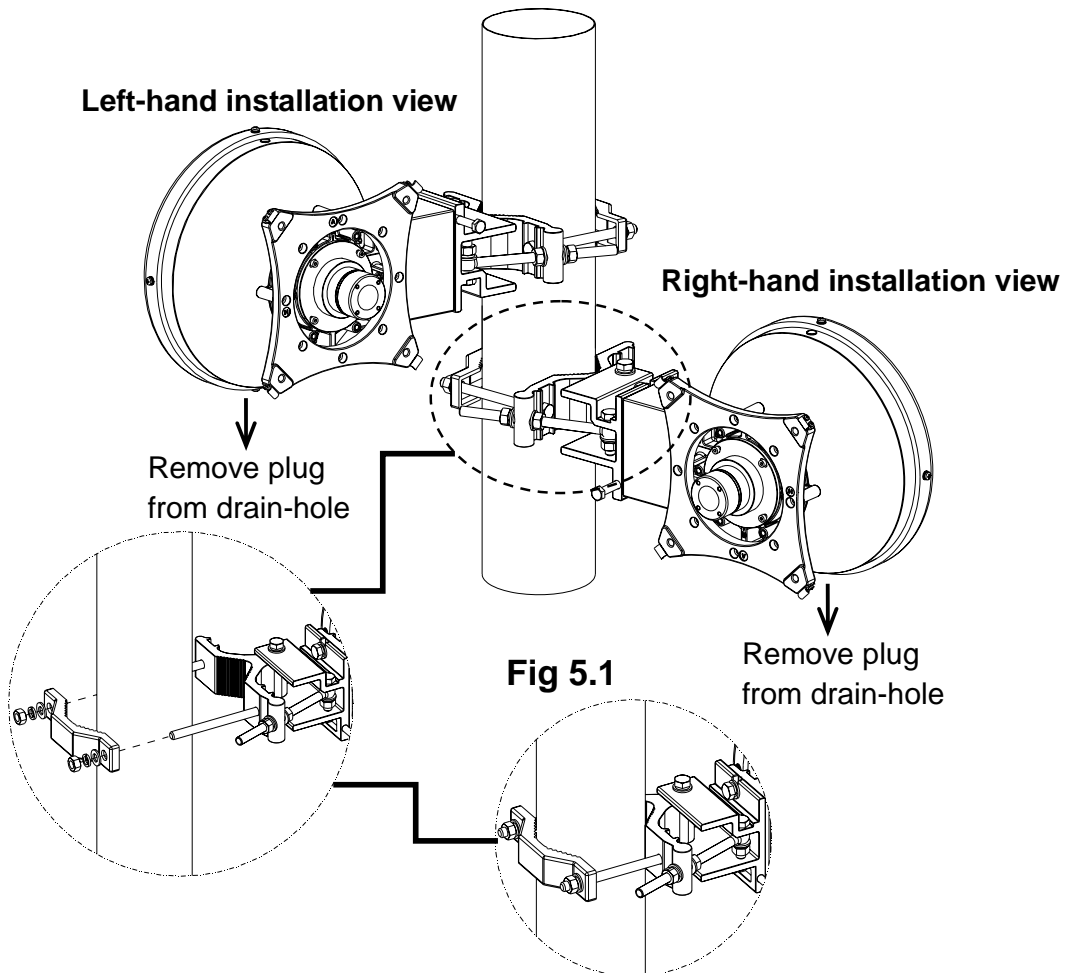


Fig 5.1

- 5.1 Attach antenna to pole using clamps (shown in Fig 5.1).
- 5.2 Align the antenna approximately to the final direction and tighten clamp bolts.
- 5.3 Remove the plug from the bottom drain-hole (shown Fig 5.2). Ensure that the top drain-hole plug is fitted securely.

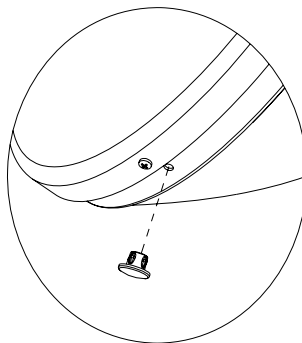


Fig 5.2

6. Antenna Adjustment

6.1 Azimuth Adjustment

Make coarse azimuth adjustment

Referring to Fig 6.1, slightly loosen the 2 nuts ① of the Clamp ②. Then push the whole antenna structure slowly around the mounting pole. Point the antenna approximately in the correct direction. Use a compass/GPS to determine the far end position if necessary, and then tighten the nuts ①.

Make fine azimuth adjustment

Loosen pivot bolts ③&④, and then adjust nuts ⑤ of Azimuth Adjustor ⑥ back and forth slowly. Antenna can be adjusted from -15° to $+15^{\circ}$. Tighten Bolts ③&④ and adjuster ⑥ after the adjustment is complete.

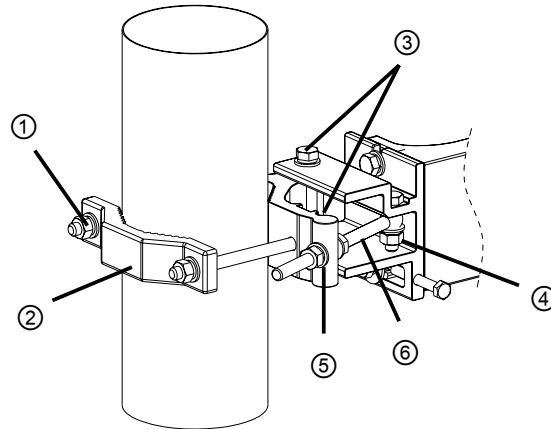


Fig 6.1

①⑤ Nut M10 ② Clamp (1 pc) ③&④ Bolt M10 ⑥Azimuth Adjustor

6.2 Elevation Adjustment

Coarse elevation adjustment was made in section 3 by selecting the correct mounting holes for the elevation required. Make fine elevation adjustment (shown in Fig 6.2) by loosening the bolts ①, and then rotate Elevation Adjustor ② clockwise or counterclockwise. The antenna has a fine adjustment of $\pm 15^{\circ}$. Tighten bolts ① after the alignment is complete. Verify the RSSI does not change after tightening.

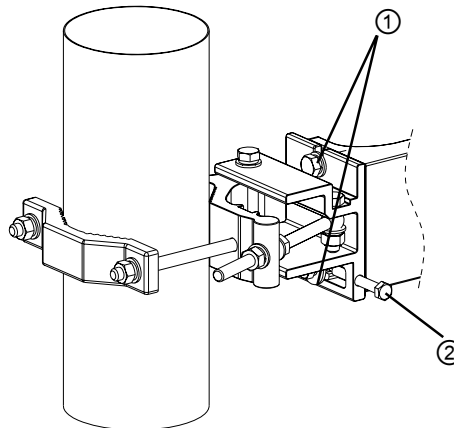


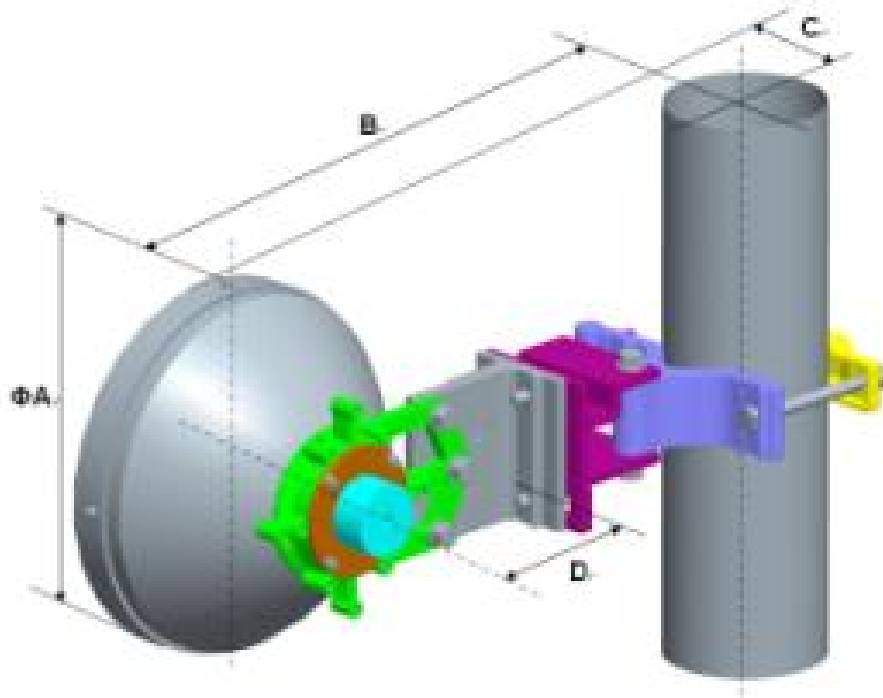
Fig 6.2

① Bolt M10 ② Elevation Adjustor

6.3 Tighten and Inspect

Tighten all the standard parts after antenna assembly is done, ensuring that the proper torque is applied. Do not mount the antenna during rainy weather or when thunderstorms are nearby.

7.0 Mechanical Dimensions



Dimensions (in/mm)	A	B	C	D
	10.3 / 261	14.0 / 356	6.42 / 163	6.6 / 167
Note: All size data above is for a pole diameter of 114 mm.				