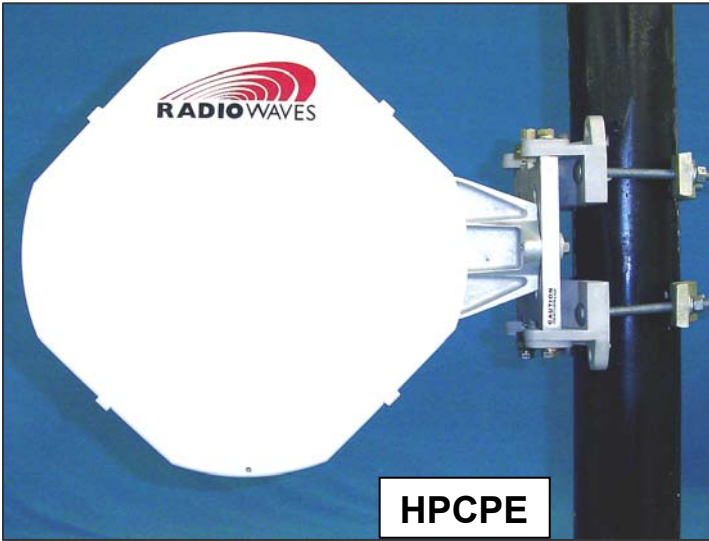


POLE MOUNT INSTALLATION GUIDE

(Used With HPCPE, HPLP1, HP2, SP1 & SP2 Antennas)

Installation examples:



Pole Mount Installation for HPCPE, HPLP1, HP2, SP1, & SP2 Antennas

Your Pole Mount Kit is shipped to you in one box containing the following components:

1. Antenna assembly
2. Pole Mount Kit

Note: Options and accessories are shipped separately and include separate installation guides. Check the packing slip.

Tools Required:

1. 9/16" Open/box wrench or deep socket wrench
2. Torque Wrench with appropriate sockets

NOTE: The pictures provided in this document are for illustrative purposes only and may not be identical to your antenna system.

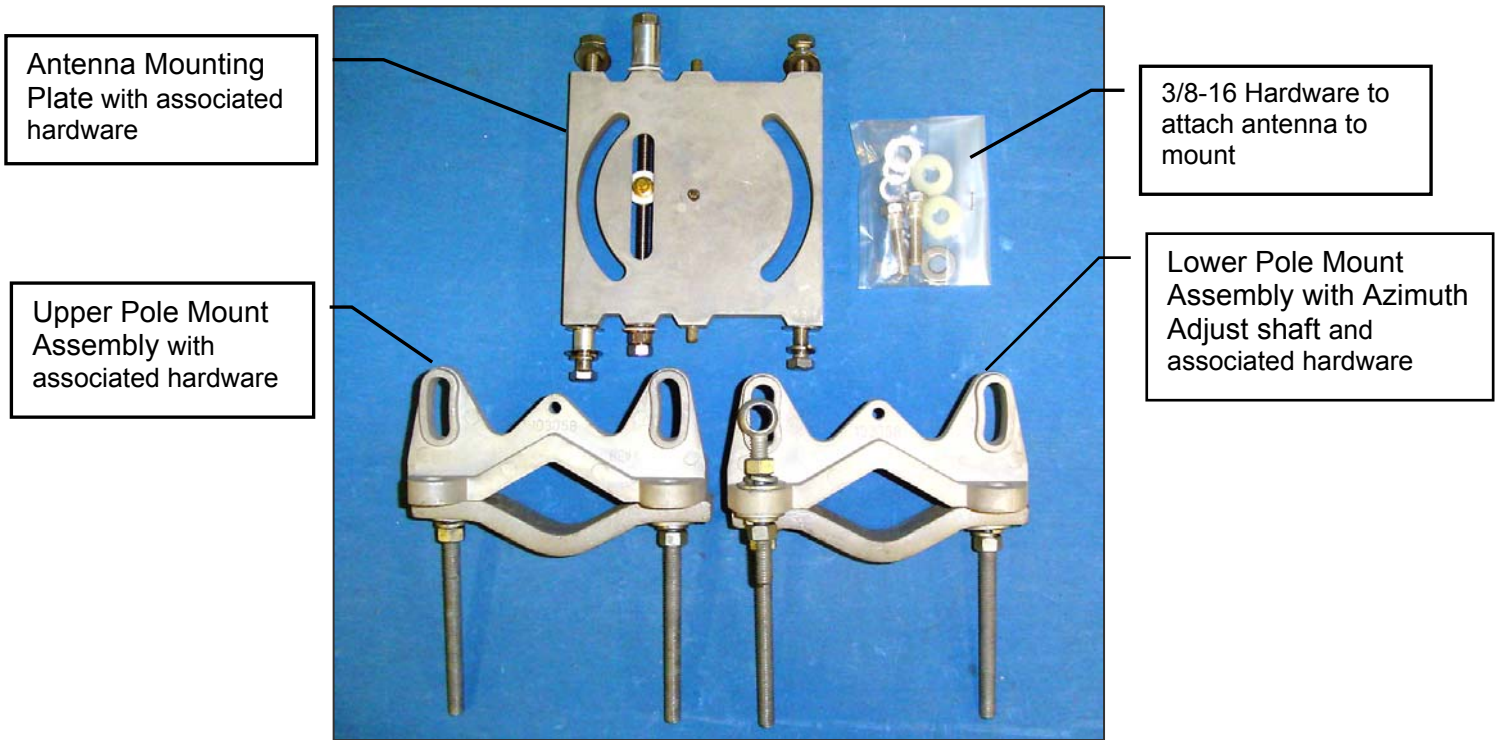
WARNINGS AND CAUTIONS:

1. Read these instructions before beginning installation. Caution should be used. Qualified persons experienced with antenna assembly and installation are required for installation.
2. Radio Waves Inc. disclaims any responsibility or liability for damage or injury resulting from incorrect or unsafe installation practices.
3. The reflector has been formed to a very close tolerance parabolic shape. Careful handling and assembly is required to avoid denting the reflector, which would degrade antenna performance.

CAUTION:

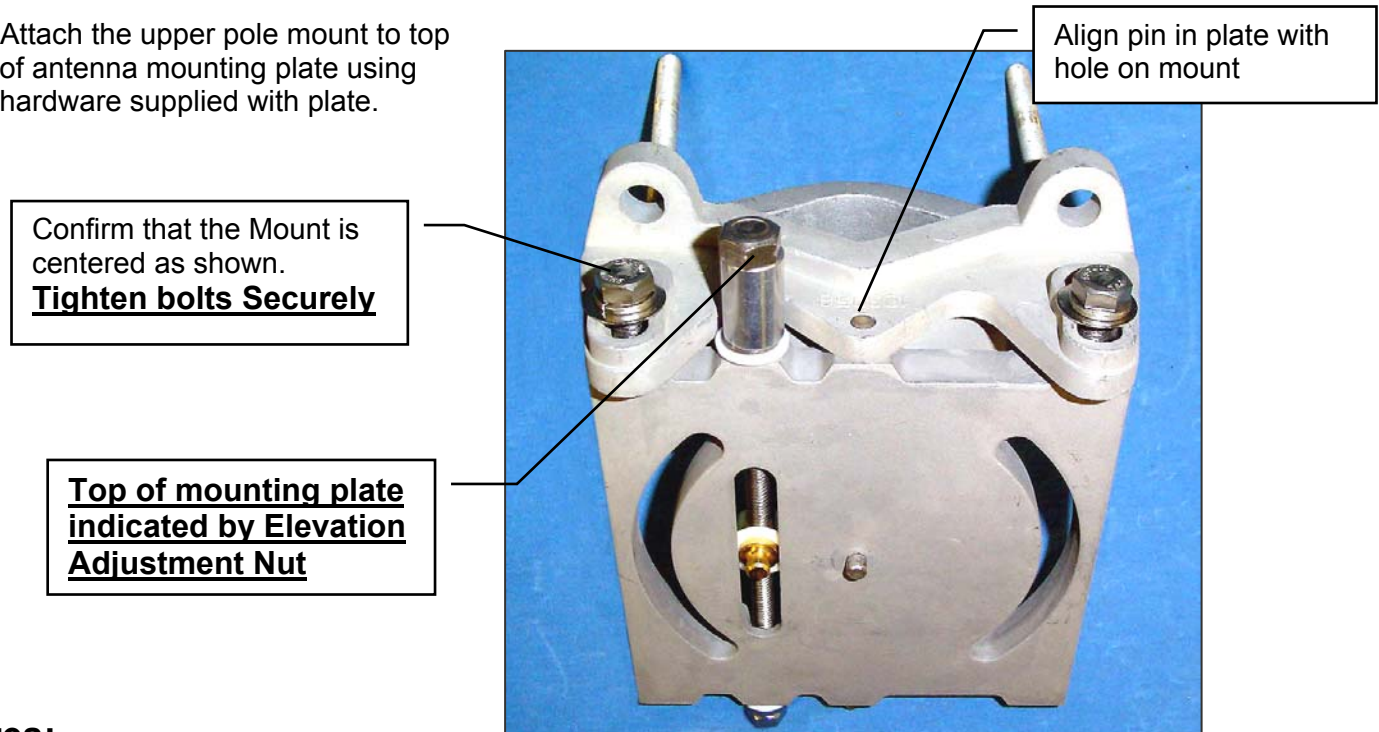


Mounting Kit Component identification:



Assembly of the Mount Kit:

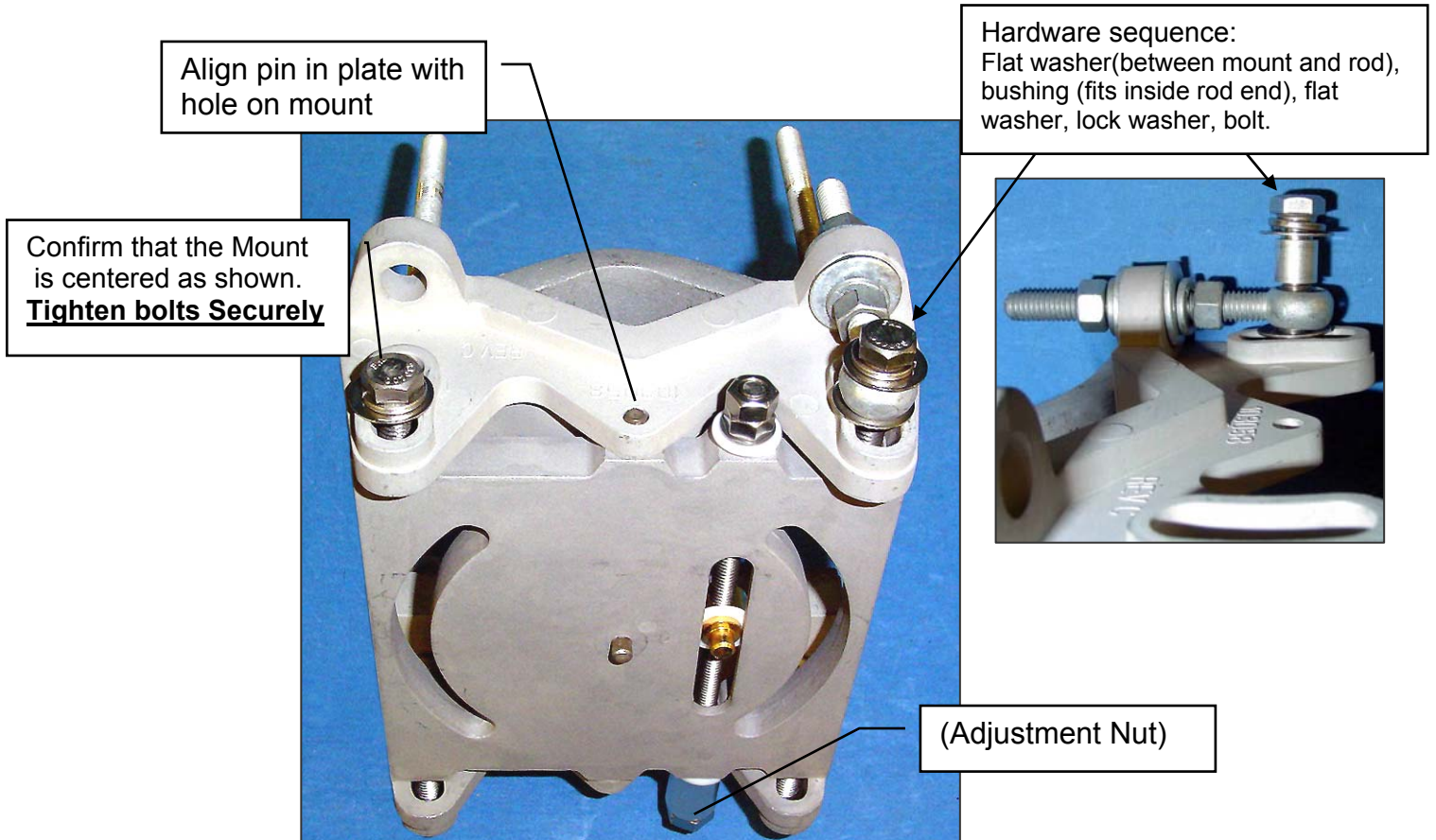
1. Attach the upper pole mount to top of antenna mounting plate using hardware supplied with plate.



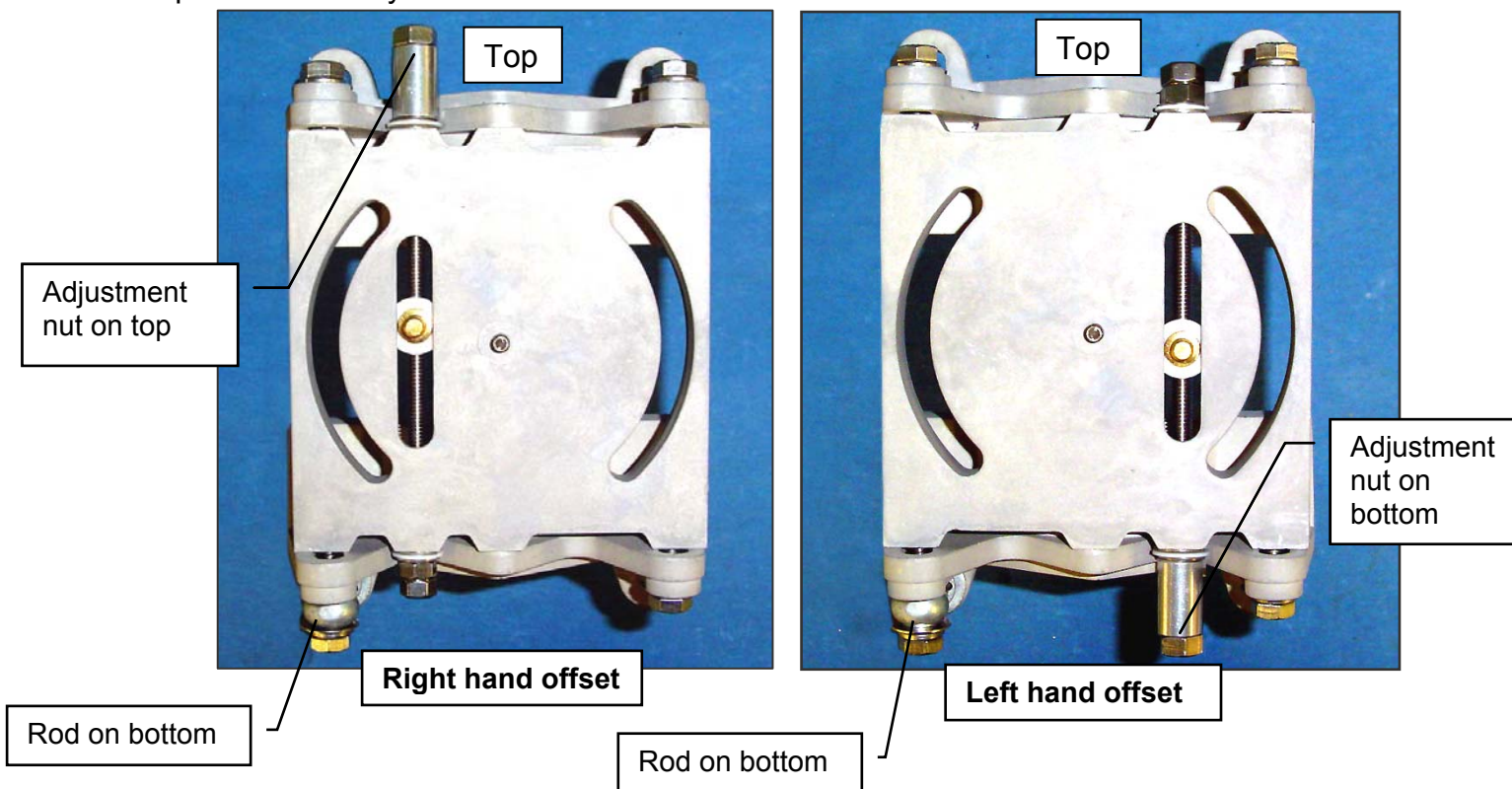
Notes:

- Right hand offset is shown, for Left hand offset rotate mounting plate 180°. (See step 3 for photo).
- Adjustments to the antenna may be necessary for Left hand offset mounting, refer to additional instructions for your antenna model.

2. Attach the lower pole mount to opposite side of plate as shown.



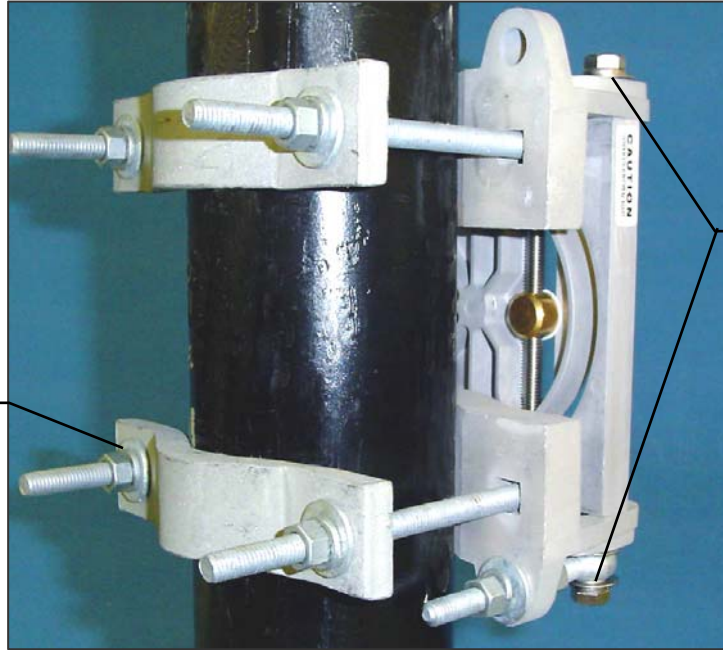
3. Completed assembly views.



Mounting on Pole

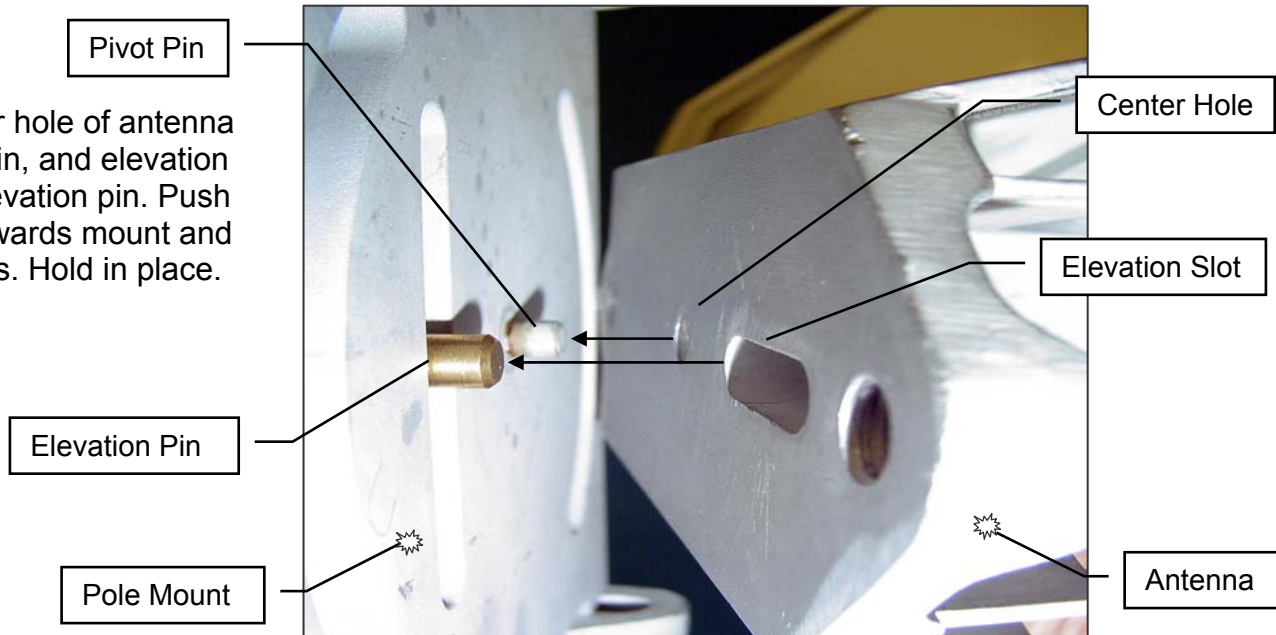
1. Fasten the assembled Mount to a maximum 4.5" OD mounting pipe using pole mounts as shown. Position so that face of mounting plate is parallel to desired beam path.

Use the flat washer, lock washer and nut provided for each lock bolt. (4X) Tighten securely

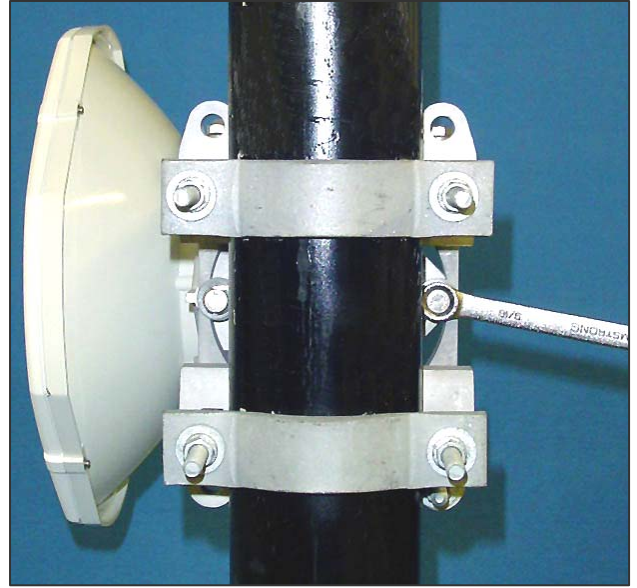
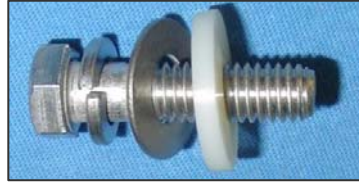


IMPORTANT:
Do not loosen the 4 bolts securing the upper and lower mounting brackets

2. Align center hole of antenna with pivot pin, and elevation slot with elevation pin. Push antenna towards mount and engage pins. Hold in place.



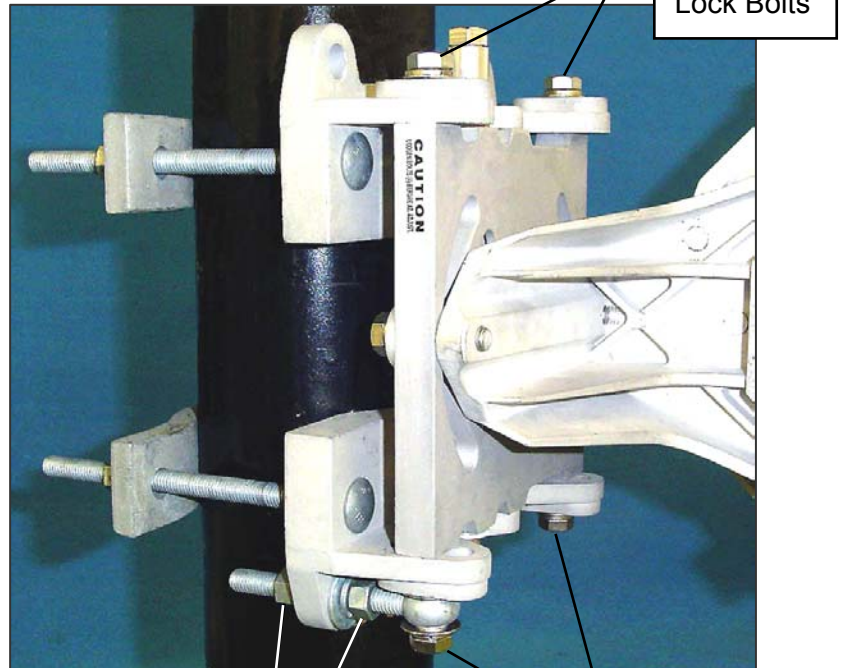
3. While supporting antenna, install (2) 3/8-16 bolts (with washers as shown) through mounting plate and into antenna. Tighten securely. Antenna is now mounted.



Adjustments:

Azimuth adjustment:

1. Loosen the 4 Azimuth Lock Bolts so mounting plate can move.
Caution: Failure to loosen bolts before adjusting will result in damage to mount.
2. Adjust mounting plate using eyebolt and nuts to drive antenna to required location. Monitor RCL (Receive Carrier Level) and adjust per radio manufacturer's instructions. Verify antenna is adjusted on main beam by passing through main beam and out to left and right 1st sidelobe. Return antenna to main beam RCL.
3. Securely tighten the 4 Az. Lock Bolts.
4. After tightening Az. Lock Bolts, Securely tighten eyebolt adjustment nuts.
5. Re-check Elevation and adjust if necessary



Eyebolt Adjustment Nuts

Azimuth Lock Bolts

Azimuth Lock Bolts

Elevation adjustment:

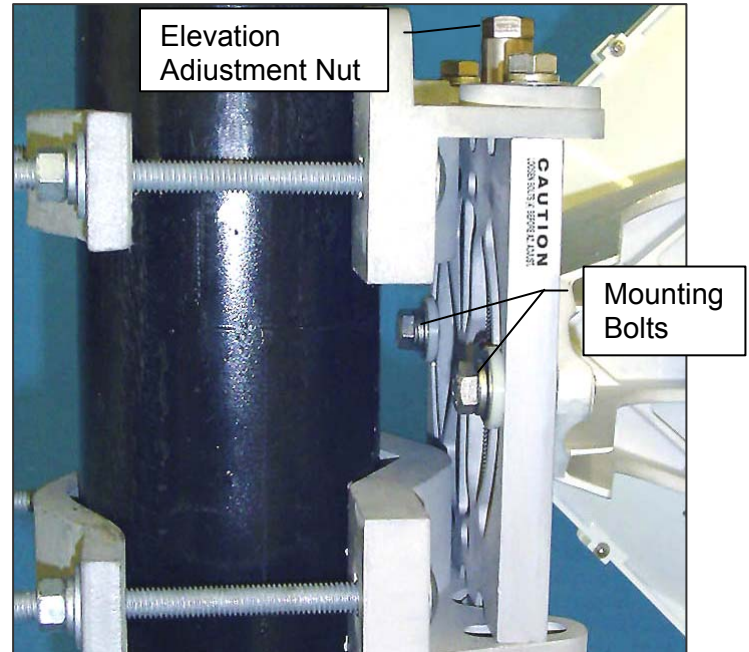
1. Loosen (2) Antenna Mounting Bolts **slightly** so antenna is able to move. Loosening bolts excessively will cause difficulty during adjustment.

Caution: Failure to loosen bolts before adjusting will result in damage to mount.

2. Rotate Elevation Adjustment Nut as required to set elevation. Monitor RCL (Receive Carrier Level) and adjust per radio manufacturers instructions. Verify antenna is adjusted on main beam by passing through main beam and out to upper and lower 1st sidelobe. Return antenna to main beam RCL.

Note: Adjustment is smoother when adjusting beam upward. (Drive antenna down past desired location and adjust while driving antenna up.)

3. Tighten mounting bolts securely after elevation is set.
4. Re-check Azimuth and adjust if necessary.



Final Inspection:

When the antenna orientation is satisfactory, re-check all hardware and torque to **15 Lb-Ft (20.3 N-m)**

After the installation:

Inspection of the antenna should be performed at least once a year to check its condition and to ensure safe operation and maintenance.

Radio Waves Contact information:

Thank you for purchasing a Radio Waves product. Radio Waves designs, manufactures and markets only the highest quality microwave antenna systems and we appreciate your business. We welcome your feedback and comments.

Contact us at the locations mentioned below:

For support with any product request, including technical support:

Telephone: 1-(978) 459-8800

FAX: 1-(978) 459-3310

E-mail: sales@radiowavesinc.com

Website: www.radiowavesinc.com

Global Headquarters:

Radio Waves, Inc.

495R Billerica Ave

N. Billerica, MA 01862

THE LEADER IN MICROWAVE ANTENNA INNOVATION®

RADIO WAVES BRINGS INNOVATION TO A COMPREHENSIVE LINE
OF MICROWAVE AND BROADBAND WIRELESS ANTENNAS:

➤ **SECTOR ANTENNAS**

UNLICENSED 2.4,3.5 & 5 GHZ
DUAL-BANDS/DUAL-POL
PRO-VIDER™ SECTOR ANTENNAS FOR WISPS
LICENSED 26,28, &38 GHZ

➤ **FLAT PANEL ANTENNAS**

2.4, 3.5, & 5 GHZ
XCELARATOR™ HIGH PERFORMANCE 5-18 GHZ FLAT PANELS

➤ **GRID PARABOLIC ANTENNAS**

1.3 TO 2.7 GHZ

➤ **STANDARD PARABOLIC ANTENNAS**

1.3 TO 13 GHZ

➤ **HIGH PERFORMANCE PARABOLIC ANTENNAS**

5.8 TO 80 GHZ
DISCRIMINATOR™ LOW-SIDE LOBE PARABOLIC
INTERFACES TO DIRECT MOUNT WITH MAJOR OEM RADIOS

➤ **TRANSMISSION LINE PRODUCTS**

TIMES LMR™
ELLIPTICAL WAVEGUIDE
FLEXIBLE WAVEGUIDE
LIGHTNING PROTECTION

➤ **MOUNTING ACCESSORIES**

CLAMPS
DOWNTILT BRACKETS

➤ **COUPLERS**

5.8 TO 38 GHZ