



495 R Billerica Ave., N.Billerica, MA 01862

Tel: (978) 459-8800 Fax: (978) 459-3310

www.radiowavesinc.com

The Leader in Microwave Antenna Innovation®

Installation Guide for HP6 ANTENNA



HP6 Antenna

Your HP6 Antenna shipped to you in one crate containing the following components:

1. HP6 Antenna Assembly
2. Antenna Mounting Kit
3. Reflector Support Strut/Azimuth Adjust assembly

Note: Options and accessories are shipped separately and include separate installation guides. Check the packing slip.

You will need the following tools to complete the assembly of the antenna at the site:

1. ¾" Open/box wrench or socket wrench
2. 15/16" Open/box wrench or socket wrench
3. 9/16" Open/box wrench or socket wrench
4. Adjustable Wrench
4. Torque Wrench with appropriate sockets

NOTE: The pictures provided in this document are for illustrative purposes only and may not be identical to your antenna system.

WARNINGS AND CAUTIONS:

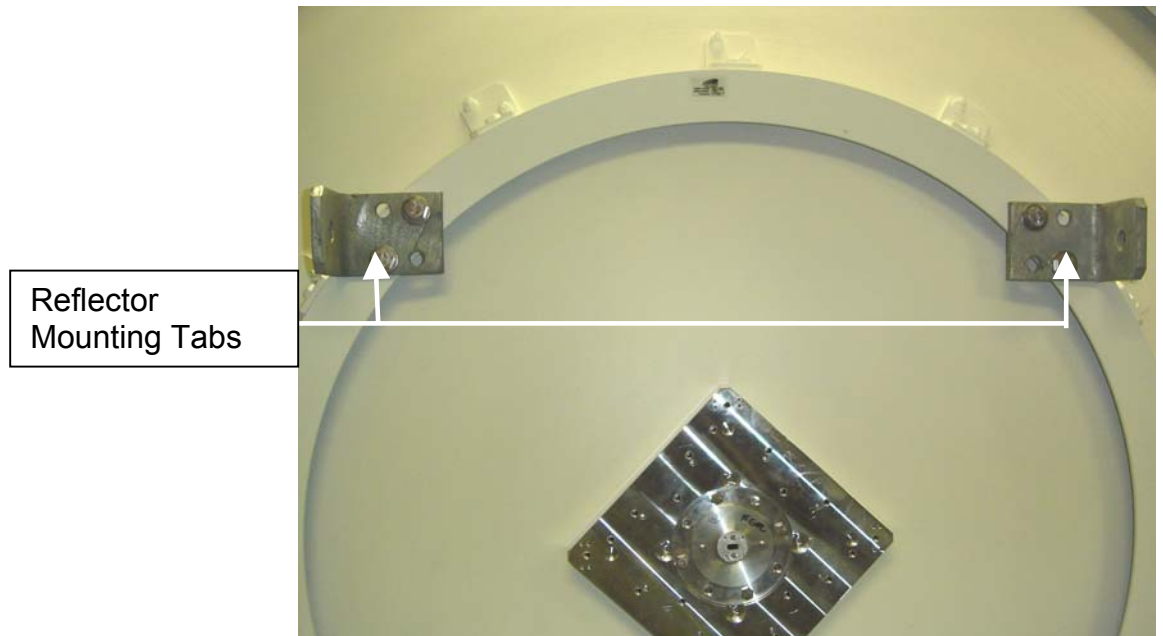
1. Read these instructions before beginning installation. Caution should be used. Qualified persons experienced with antenna assembly and installation are required for installation.
2. Radio Waves Inc. disclaims any responsibility or liability for damage or injury resulting from incorrect or unsafe installation practices.
3. The reflector has been formed to a very close tolerance parabolic shape. Careful handling and assembly is required to avoid denting the reflector, which would degrade antenna performance.

Caution:



HP6 Antenna

HP6 reflector



The Mounting Assembly:

Right Hand Offset



Left Hand Offset

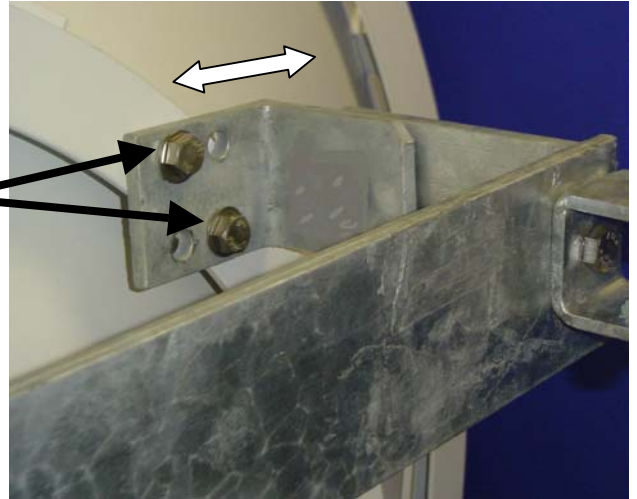


HP6 Antenna

NOTE: From this point forward, Right Hand Offset is shown.

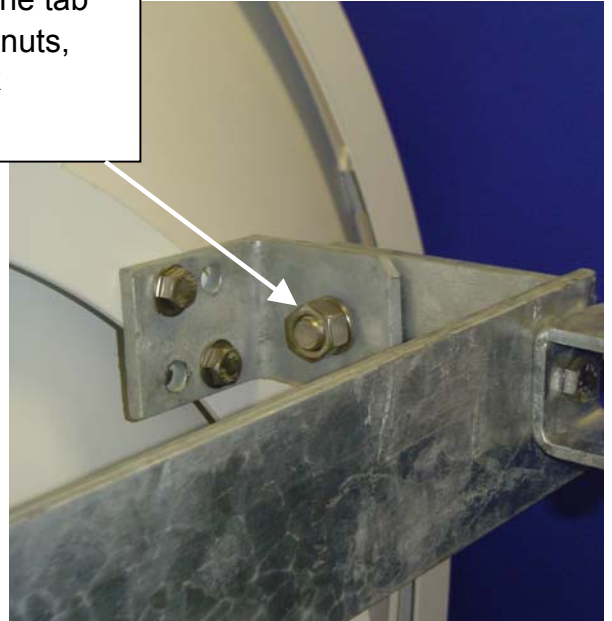
1. Adjust ring tabs, 2x, to fit snug against pole mount:

Loosen,
Adjust tab,
Retighten



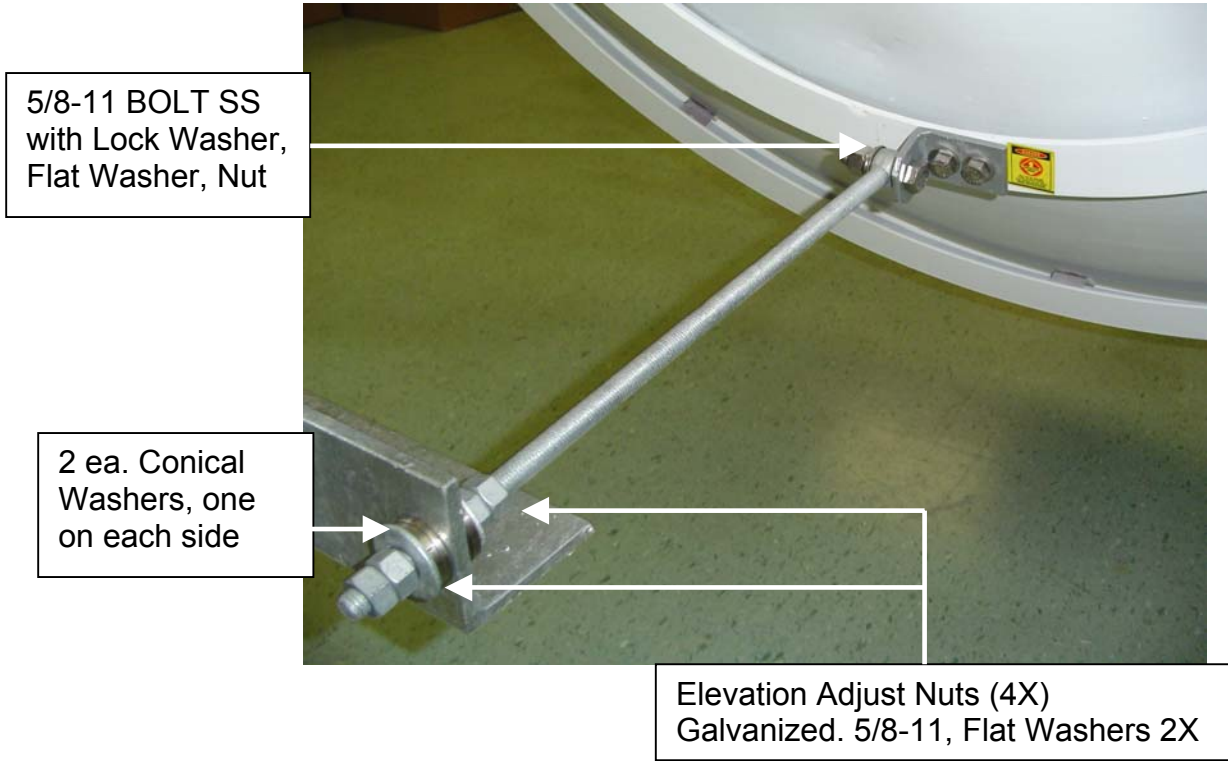
2. Insert the ring tabs into the Pole Mount.

Secure the mount to the tab
with $\frac{3}{4}$ " x 2 bolts, $\frac{3}{4}$ " nuts,
flat washers, and lock
washers.



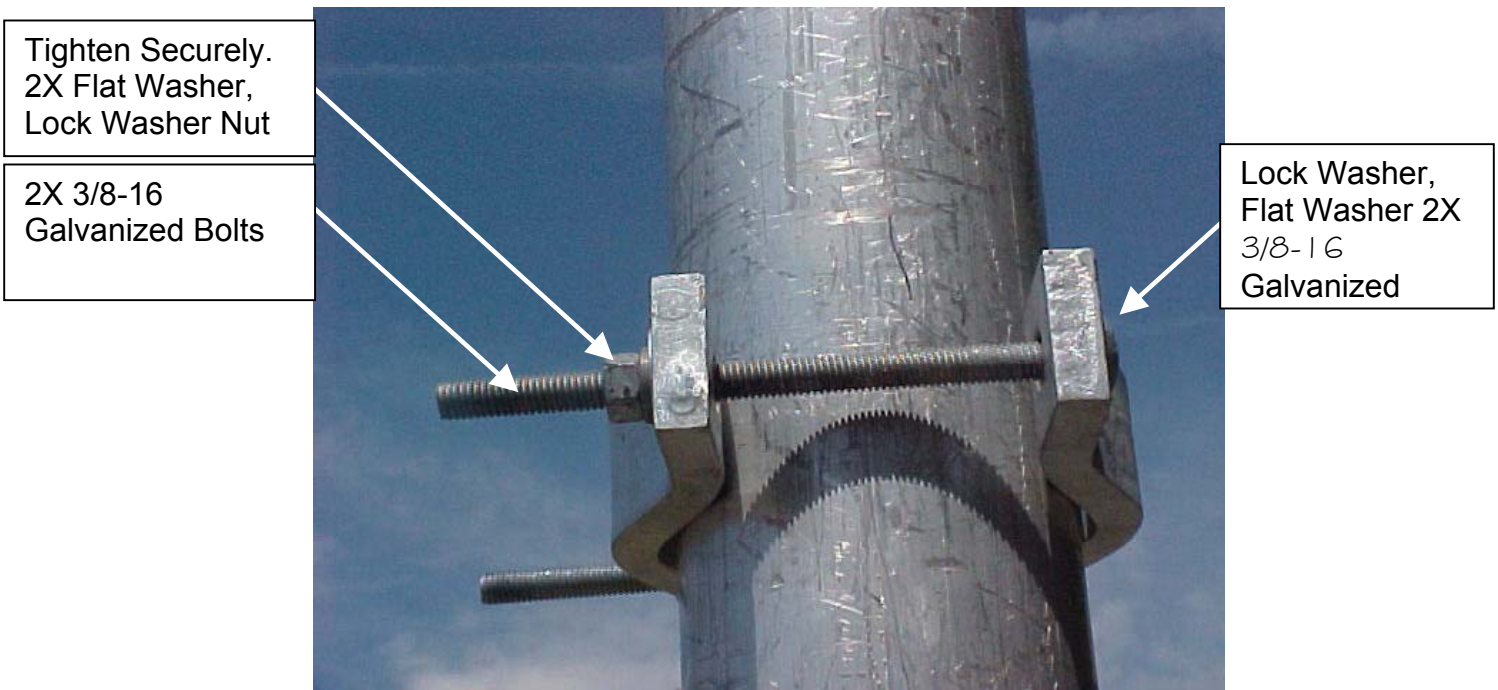
HP6 Antenna

3. Attach the Elevation Shaft to the reflector and the mount



4. **FEED ORIENTATION:** If Plane Feed has been ordered, the factory default is Vertical Polarization. Refer to supplemental instructions to adjust the feed to horizontal polarization.

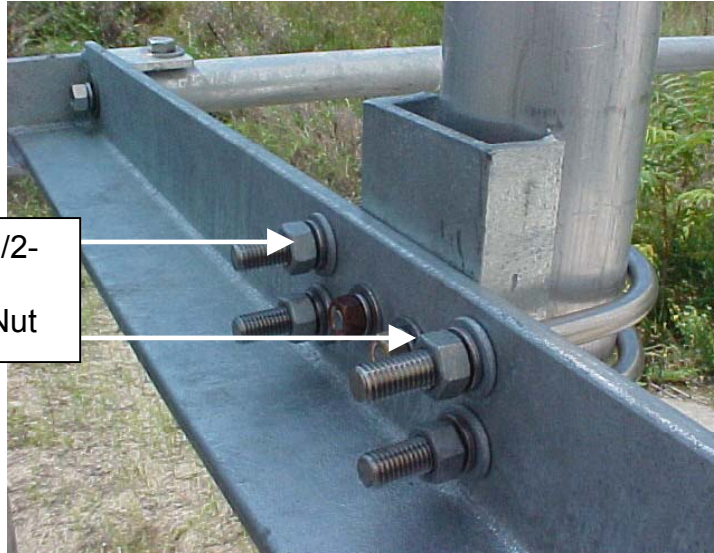
5. Fasten Shear Stop to 4.5" OD mounting pipe.



HP6 Antenna

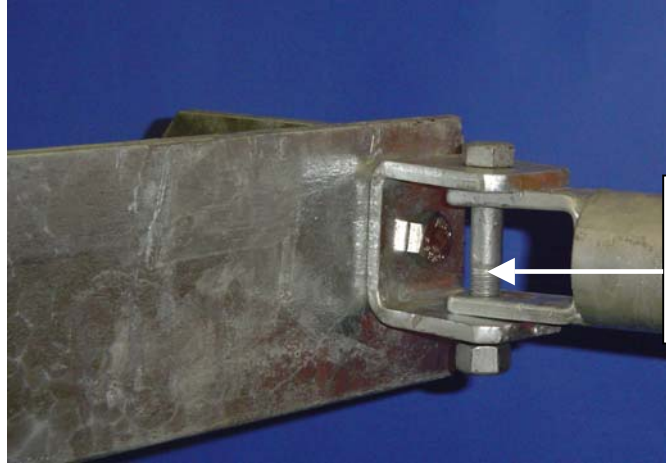
6. Fasten antenna and mount to pole. Note pole mount rests on the pipe clamp U-bolt.

Tighten Securely. 3X 1/2-13 U Bolt SS with Lock Washer, Flat Washer, Nut



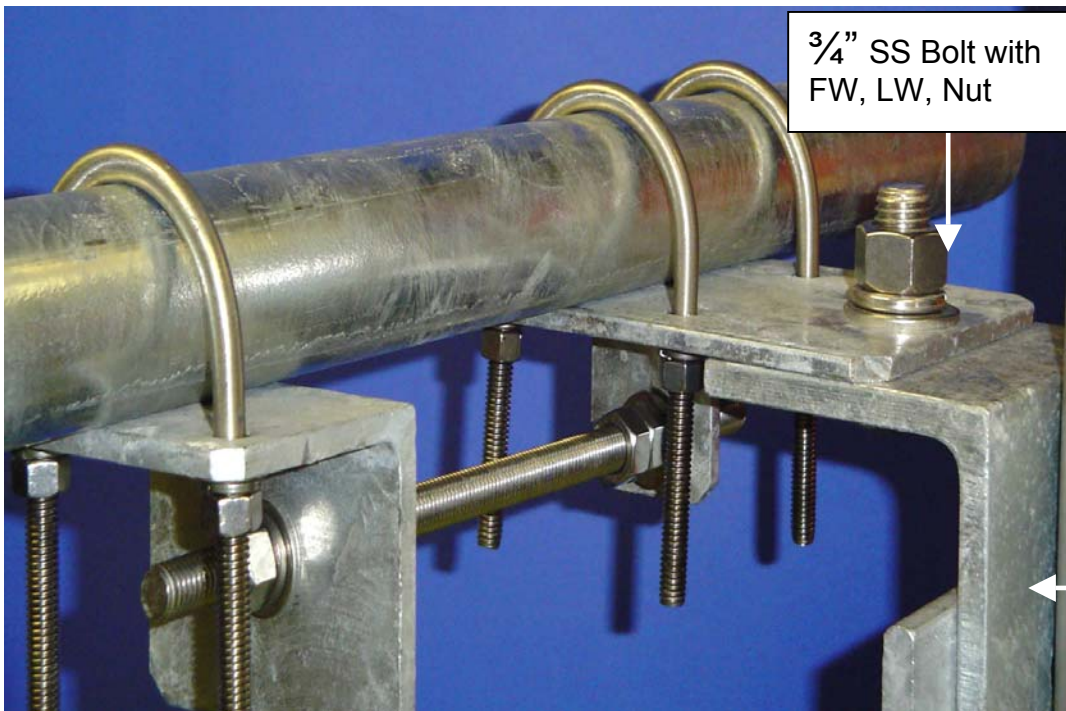
HP6 Antenna

7. Attach strut to antenna mount.



$\frac{1}{2}$ - 13 x 3" galvanized bolt, $\frac{1}{2}$ - 13 lock washer and nut, galvanized.

8. Attach strut to tower.

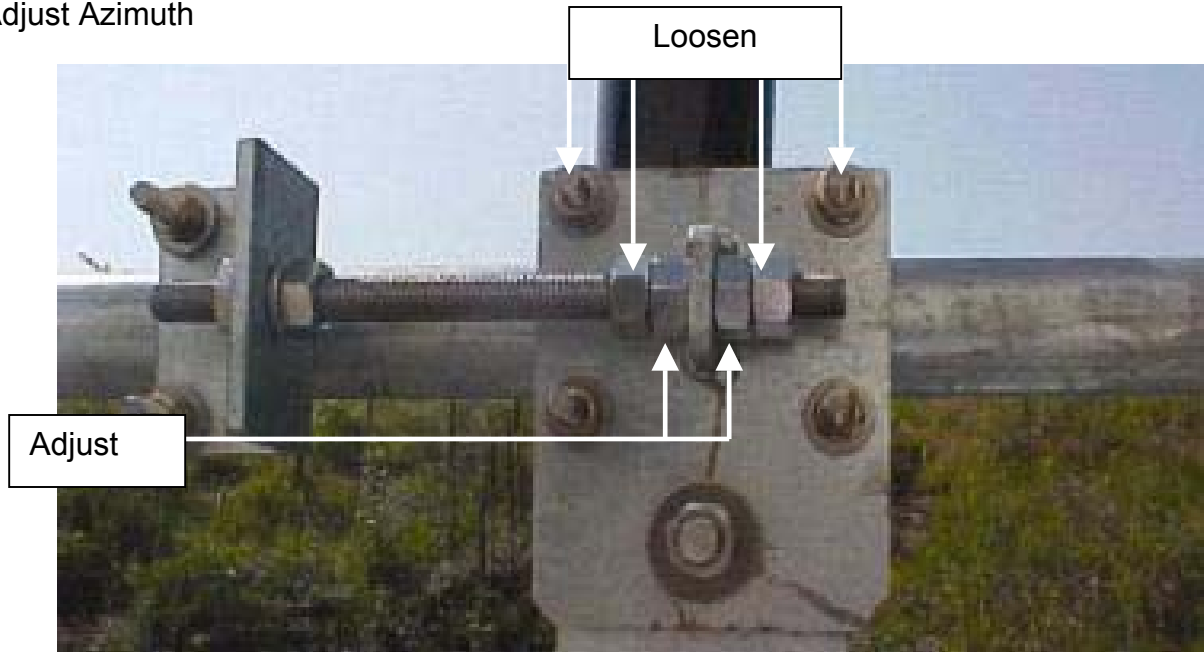


$\frac{3}{4}$ " SS Bolt with FW, LW, Nut

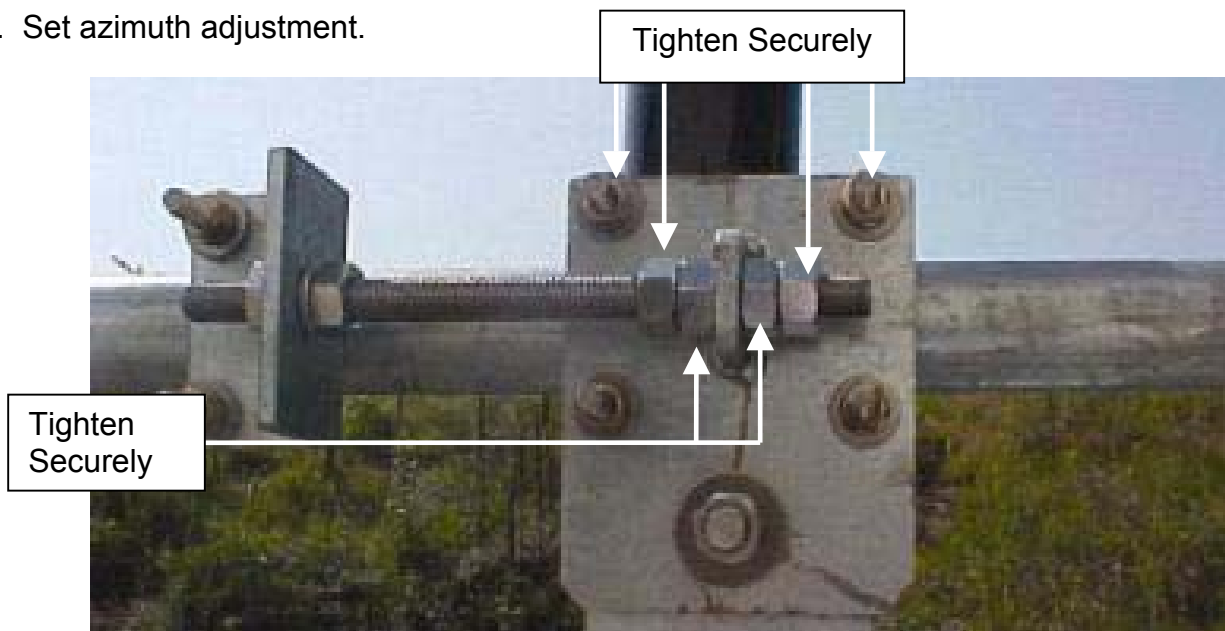
Structure Support bracket, secured with $\frac{3}{4}$ " X 2.5" SS Bolt, and $\frac{3}{4}$ SS Flat Washer, Lock Washer, Nut

HP6 Antenna

9. Adjust Azimuth

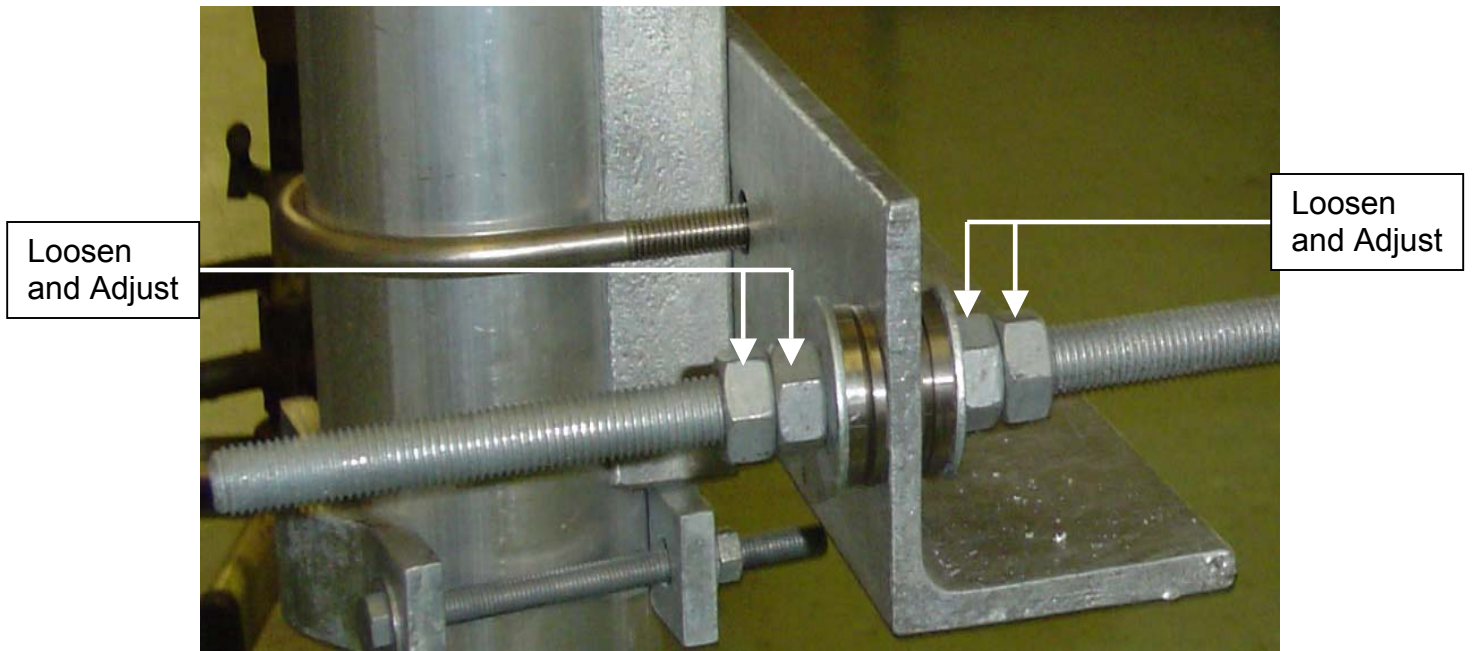


10. Set azimuth adjustment.

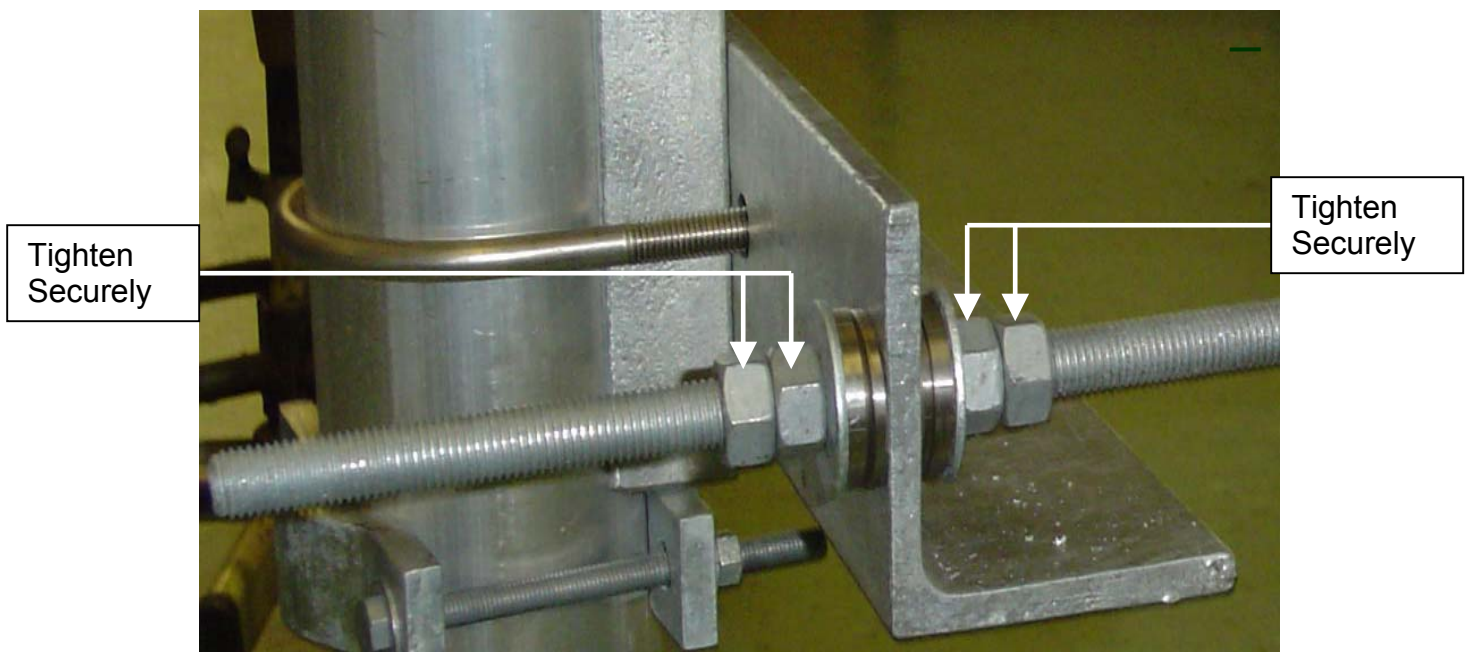


HP6 Antenna

11. Elevation Adjustment

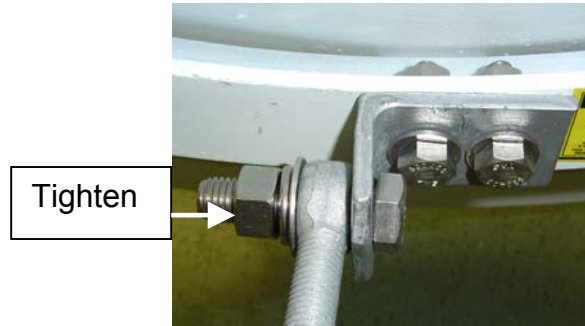
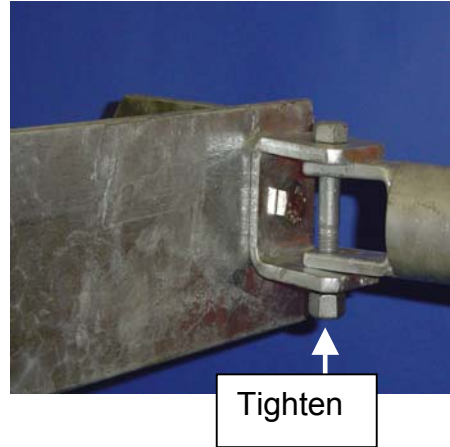
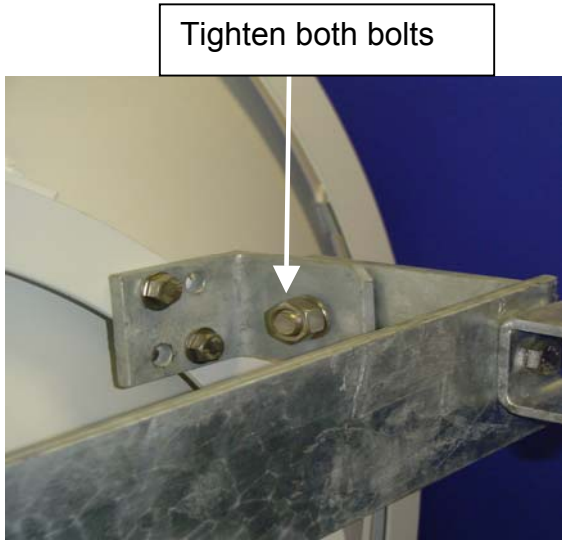


12. Set elevation Adjustment



HP6 Antenna

13. Tighten all hardware using torque specifications below:



TORQUE SPECIFICATIONS

Nominal Bolt Size (Inches)	Nut Torque
1/4	50 in-lb
5/16	102 in-lb
3/8	15 ft-lb
7/16	24 ft-lb
1/2	37 ft-lb
5/8	60 ft-lb
3/4	75 ft-lb

HP6 Antenna

Radio Waves Contact information:

Thank you for purchasing a Radio Waves product.

Radio Waves designs, manufactures and markets only the highest quality microwave antenna systems and we appreciate your business. We welcome your feedback and comments.

Contact us at the locations mentioned below:

For support with any product request, including technical support:

Telephone: 1-(978) 459-8800

FAX: 1-(978) 459-3310

E-mail: sales@radiowavesinc.com

Website: www.radiowavesinc.com

Global Headquarters:

Radio Waves, Inc.

495R Billerica Ave

N. Billerica, MA 01862 USA

THE LEADER IN MICROWAVE ANTENNA INNOVATION®

RADIO WAVES BRINGS INNOVATION TO A COMPREHENSIVE LINE OF MICROWAVE AND BROADBAND WIRELESS ANTENNAS:

- **SECTOR ANTENNAS**
UNLICENSED 2.4,3.5 & 5 GHZ
DUAL-BANDS/DUAL-POL
PRO-VIDER™ SECTOR ANTENNAS FOR WISPS
LICENSED 26,28, &38 GHZ
- **FLAT PANEL ANTENNAS**
2.4, 3.5, & 5 GHZ
XCELARATOR™ HIGH PERFORMANCE 5 GHZ FLAT PANELS
- **GRID PARABOLIC ANTENNAS**
1.3 TO 2.7 GHZ
- **STANDARD PARABOLIC ANTENNAS**
1.3 TO 13 GHZ
- **HIGH PERFORMANCE PARABOLIC ANTENNAS**
5.8 TO 60 GHZ
DISCRIMINATOR™ LOW-SIDE LOBE PARABOLIC
INTERFACES TO DIRECT MOUNT WOTH MAJOR OEM RADIOS
- **TRANSMISSION LINE PRODUCTS**
TIMES LMR™
ELLIPTICAL WAVEGUIDE
FLEXIBLE WAVEGUIDE
LIGHTNING PROTECTION
- **MOUNTING ACCESSORIES**
CLAMPS
DOWNTILT BRACKETS
- **COUPLERS**