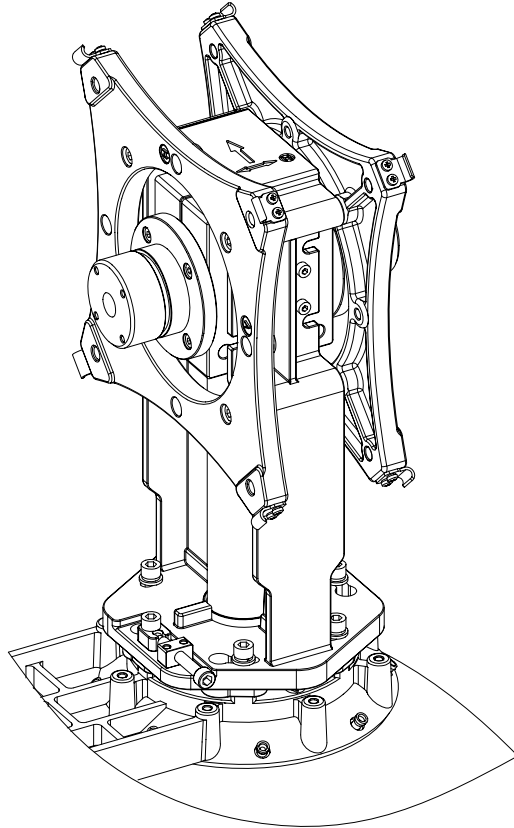


Installation Instructions

For OMC-XX-HP-T2 Direct Mount Ortho-mode Combiner



Remarks: Before Installation, please read the instruction carefully.

- ◆ This instruction booklet covers the installation of Direct Mount Ortho-mode combiner onto a model ADXX-XX-T2 Antenna.
- ◆ Installation, maintenance and removal of the combiner should be carried out by qualified experienced personnel.
- ◆ To guarantee performance, the combiner should be inspected at least once a year by qualified personnel.

CONTENT

1. Requirement of Installation	1
1.1 Overview.....	1
1.2 Tools Required for Installation.....	1
1.3 Fastener Torque	1
2. Open the Package and Identify Parts	1
3. Remove the ODU adapter from the Antenna.....	2
4. Mount Ortho-mode Combiner (OMC) to Antenna	3
4. Adjust the OMC (required only if the bubble is off center).....	4
5. Part Numbers and Dimensions	5

1. Requirement of Installation

1.1 Overview

This Ortho-mode combiner (OMC) can be only mounted to a model ADXX-XX-T2 antenna. The antenna has 6 tapped holes for attachment of the OMC, and the transition provided with the antenna must be removed prior to installing the OMC. It is highly recommended that all installation be done on the ground for safety reasons and to prevent potential damage or lost parts. All O-rings must be properly seated to prevent moisture from entering the OMC or antenna.

1.2 Tools Required for Installation

5mm L-Spanner (*Used for Screw M6*)

1.3 Fastener Torque

Please use the following torque values during installation

Recommended Torque

NO.	Fastener Size	Torque (N-m)
1	M3	0.6
2	M4	1.3
3	M5	3
4	M6	5
5	M10	28

2. Open the Package and Identify Parts

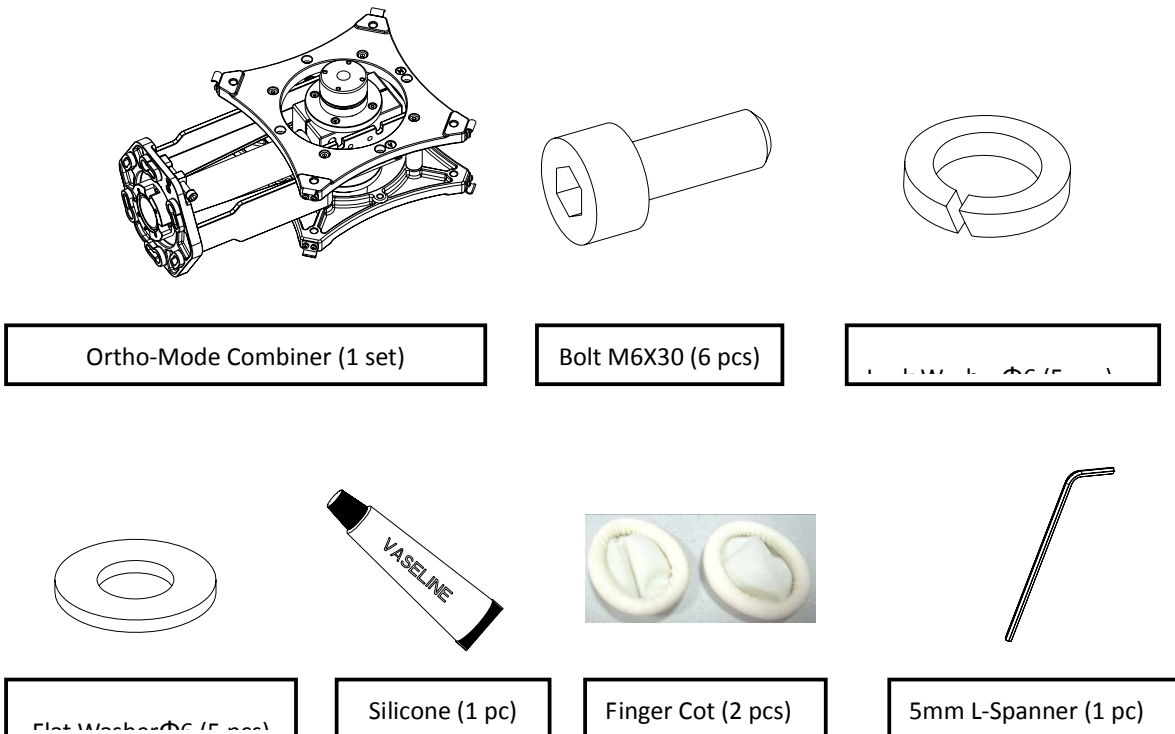


Fig 2.1 Parts List

3. Remove the ODU adapter from the Antenna

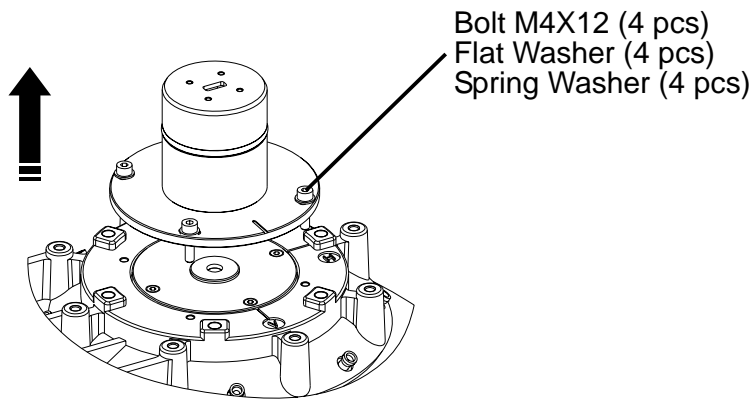
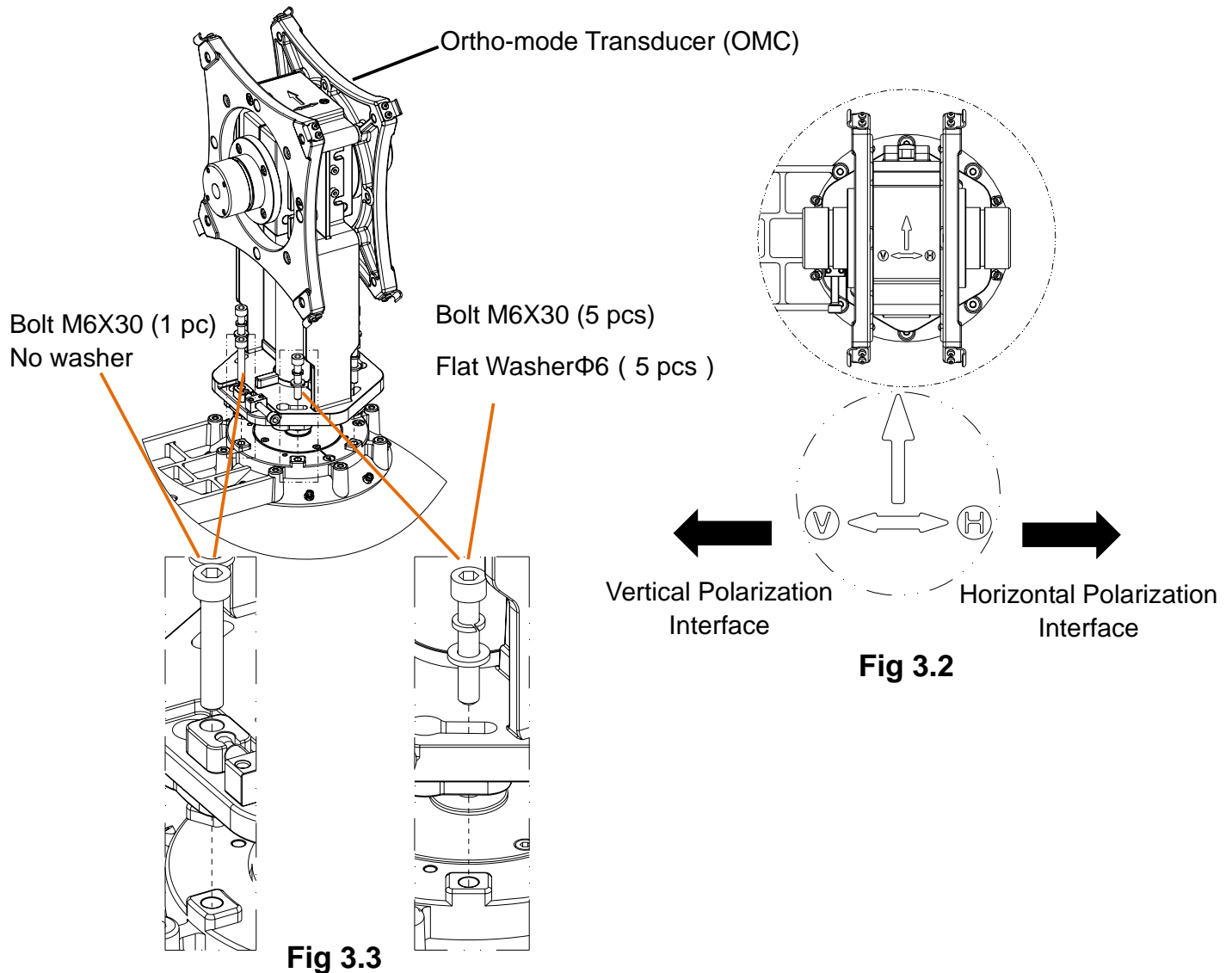


Fig 3.1

Remove the ODU adapter and mount already on the antenna by removing the 4 M4 bolts (Adapter) using a 3 mm L-spanner, and the 8 M5 bolts (Mount) using a 4 mm L-spanner. These parts will not be needed once the OMC is installed. See Fig 3.1

4. Mount Ortho-mode Combiner (OMC) to Antenna

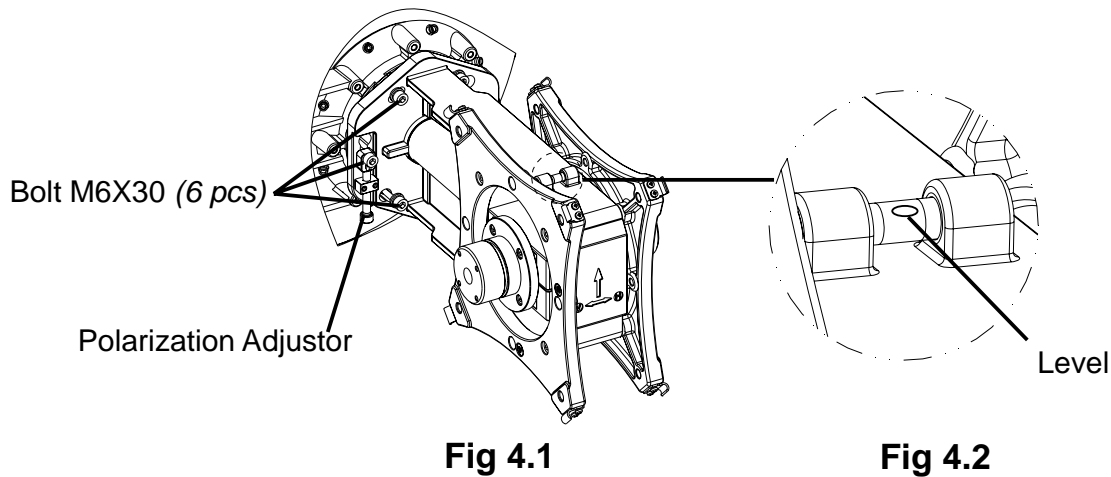


Step 1: Put the OMC into the Center Plate, and make sure it is in the correct direction as shown in Fig 3.2.

Step 2: Use M6X30 bolt (6pcs) with flat and split washers to connect these two parts as shown in Fig 3.3. Note that the bolt going through the polarization adjuster does NOT require a washer. All other use a lock and flat washer.

Step 3: Tighten all the fasteners. The antenna and OMC are now ready to install on the tower,

4. Adjust the OMC (required only if the bubble is off center)



Step1: After installation on the tower, loosen M6X30 bolt (6PCS), then fine tune the Polarization Adjustor until the bubble of level is centered (shown in Fig 4.1 and Fig 4.2). This should only be done after the antenna is mounted on the tower to ensure that the antenna polarization is accurate and to account for mounting angle on the tower.

Step 2: Tighten all the fasteners.

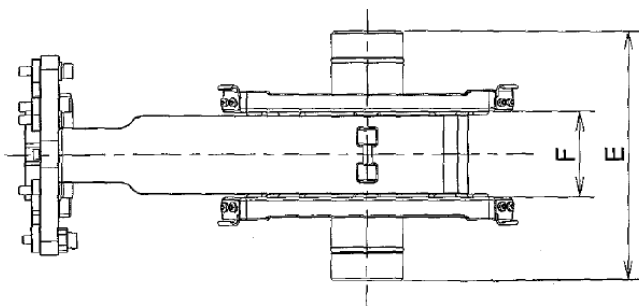
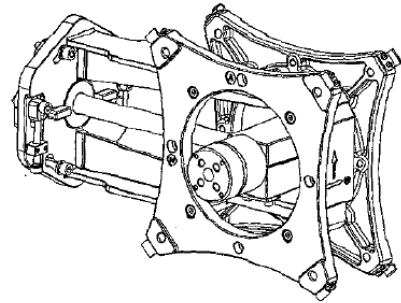
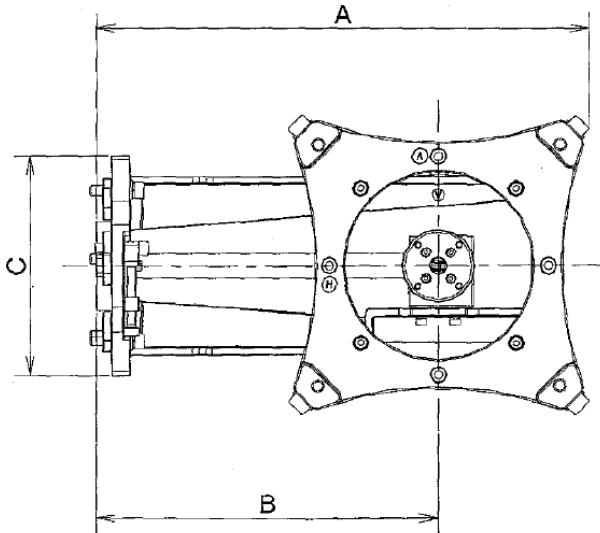
Step 3: Install ODUs to the OMC, ensuring that the V indicator is at the 12 O'clock position for the V Side and the H indicator is at the 12 O'clock position for the H side. See Figure 4.3 for an example.

Fig 4.3

5. Part Numbers and Dimensions

Below is a table of the Direct mount OMC part numbers showing supported ODUs, and dimensional data for the OMC.

Trango Part Number	Frequency Range (GHz)	ODU Type
OMC-6-HP-T2-1	5.9 -7.1	HP, HP1
OMC-6-HP-T2-2	5.9 -7.1	HP2, HP3
OMC-8-HP-T2	7.125-8.5	HP, HP1, HP2, HP3
OMC-11-HP-T2	10.7-11.7	HP, HP1, HP2, HP3
OMC-13-HP-T2	12.75-13.25	HP, HP1, HP2, HP3
OMC-15-HP-T2	14.4-15.35	HP, HP1, HP2, HP3
OMC-18-HP-T2	17.1-19.7	HP, HP1, HP2, HP3
OMC-23-HP-T2	21.1-23.6	HP, HP1, HP2, HP3
OMC-27-HP-T2	24.25-29.5	HP, HP1, HP2, HP3
OMC-32-HP-T2	31.8-32.3	HP, HP1, HP2, HP3
OMC-38-HP-T2	37.0-40.0	HP, HP1, HP2, HP3



OMT Dimensions(mm)	
A	323
B	224.5
C	144.5
E	163
F	56